



STUDENT GUIDE FOR INTERNATIONAL STUDENTS IN DINGOLFING



WELCOME TO DINGOLFING AND TO HS LANDSHUT!

This practical guide will help you to have a smooth start into your new student life in Germany.

Here you can find valuable information regarding life in Dingolfing, bureaucratic processes, services offered by the University, student groups, and much more!

STUDENT GUIDE

INDEX

We know how overwhelming it can be to get started in a new country, so we have prepared a practical guide that will help you to have a smooth start into this new and exciting experience. Here you will find information regarding:

1. Campus Location in Dingolfing and Landshut
2. Public transport
3. Registration at the Citizens' Office
4. Visa / residence permit
5. Accommodation
6. Bank
7. Health Insurance
8. Financing of studies
9. First steps in the online campus
10. Student ID and semester ticket
11. Library system
12. Student groups
13. Sports offer
14. Language courses
15. Programs for international students
16. Events

We wish you a successful and interesting time in the University of Applied Sciences and hope you have fun in Dingolfing!

Please do not hesitate to contact the Michelle Haller if you have any further questions or if anything is unclear to you, we will be happy to help!

Mail: incoming_dingolfing@haw-landshut.de

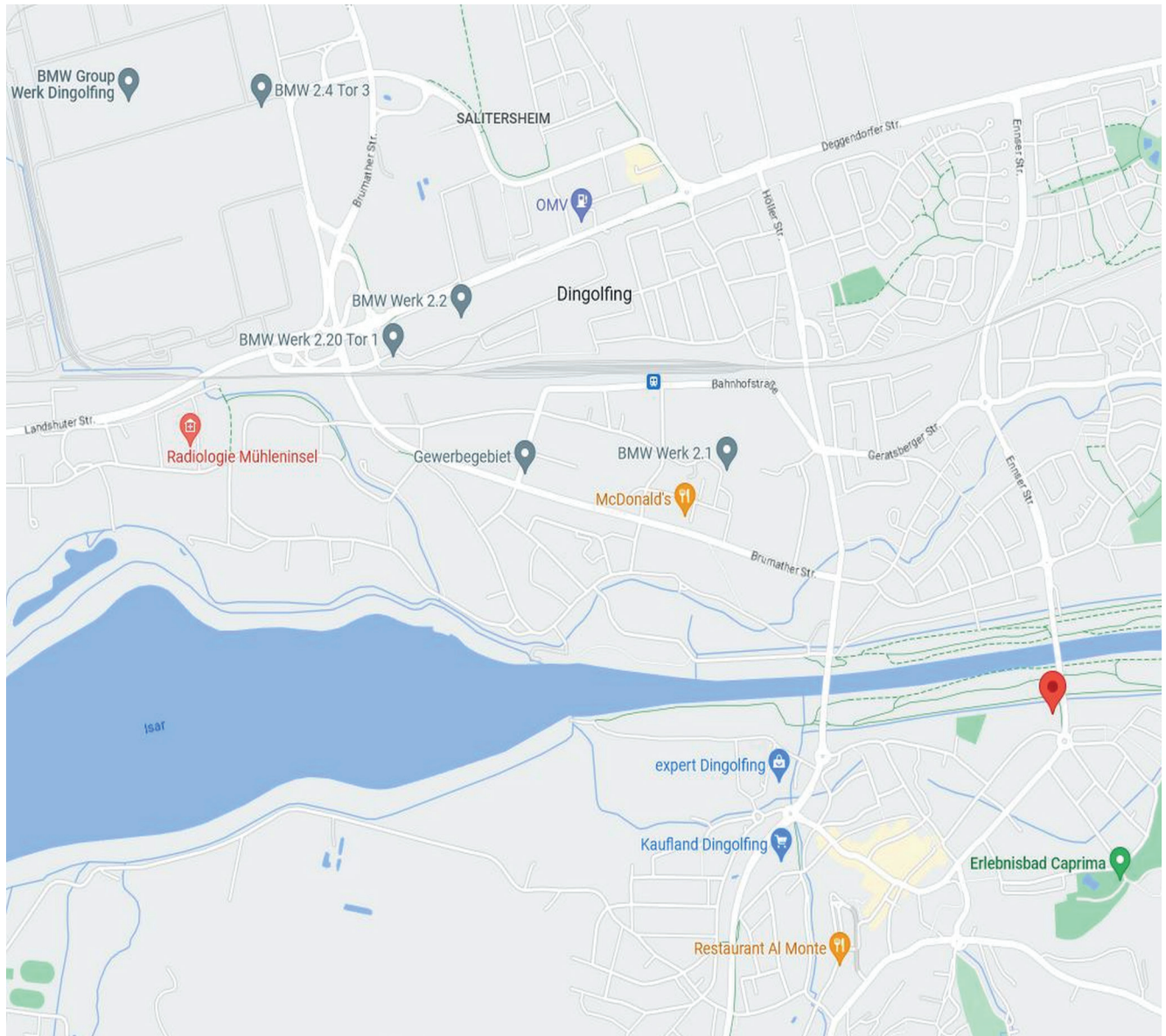


HS LANDSHUT LOCATION - CAMPUS DINGOLFING

HOW TO GET TO THE UNIVERSITY OF APPLIED SCIENCES

The Technology Center in Dingolfing is located in the east side of the city, close to the Isar River. Its strategic location close to the BMW factories enables the cooperation between the academia and the industry sector. The campus can be reached by car via the A92 and by bus using the line 308 in direction to Landau.

[Here](#) you can find a campus 360 degree tour, so that you can be well oriented from day one.



The Campus Dingolfing can be reached by bus or train, find out more in the next pages under "public transport".

HS LANDSHUT LOCATION - CAMPUS DINGOLFING

ABOUT DINGOLFING



OUR CAMPUS AND STUDY LOCATION IN DINGOLFING

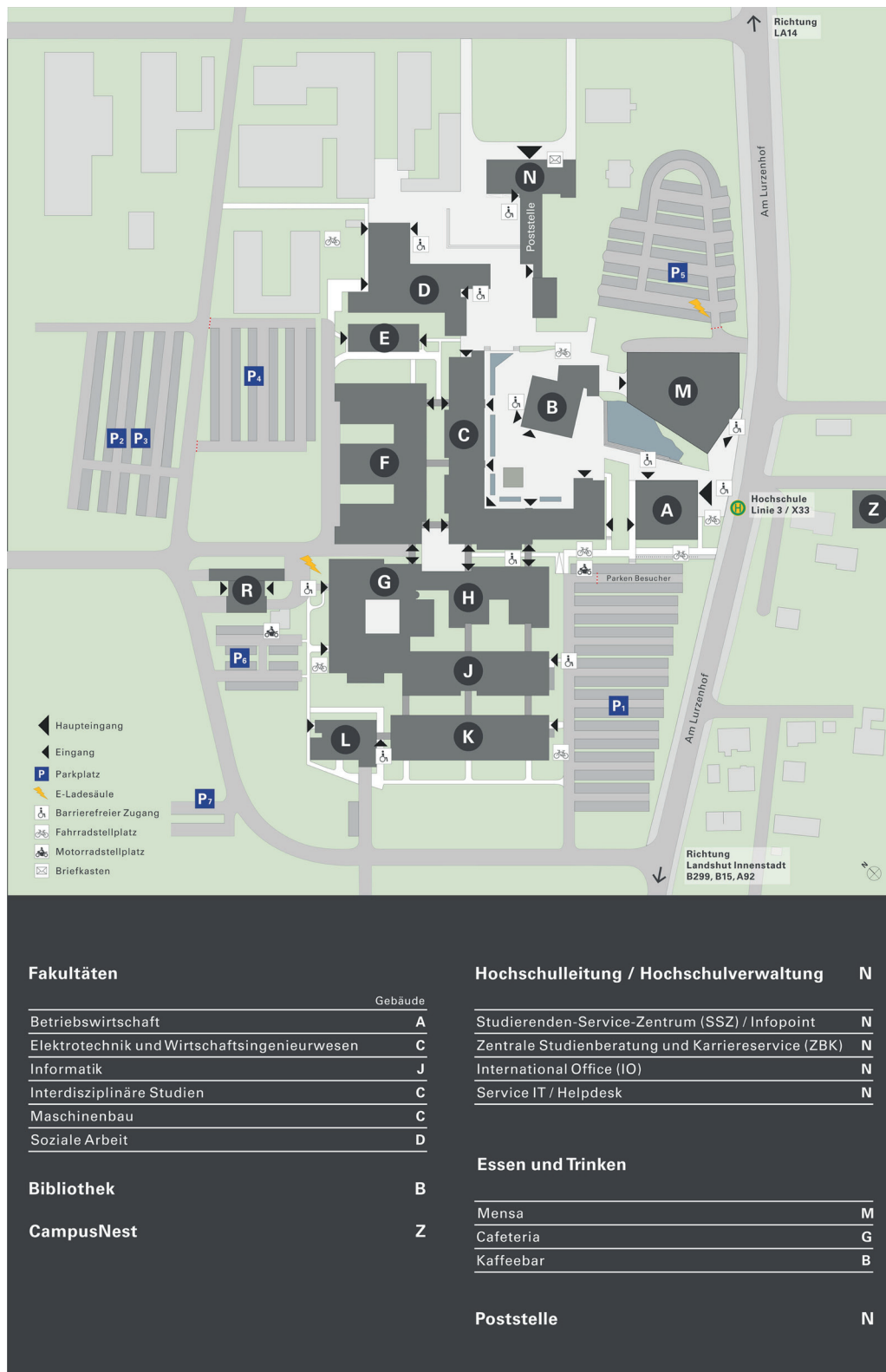
Discover Dingolfing - a place full of opportunities! In addition to an excellent education and promising career opportunities, numerous leisure activities await you. Experience the annual Dingolfing "Kirta" folk festival with marquees, rides, and delicious chocolate fruits. Another highlight is the "Adebar" in Dingolfing's center. This rooftop bar spoils you with drinks and offers you and your fellow students the perfect location to end a productive day in a relaxed atmosphere. An absolute must for students.

Every two years during the soccer World or European Championship the "Dingfest" - a festival with first-class artists - takes place in Dingolfing for ten days. Enjoy the skate park and the popular beach bar "Sabine's Isar Hütt'n" directly next to the Isar. In summer you can refresh yourself at the "Mossandlweiher" or all year long, the famous "Erlebnisbad CAPRIMA" awaits you. For bike lovers, there are challenging downhill trails and picturesque bike paths along the Isar. In the "DAV Kletterzentrum Dingolfing", bolder and climbing enthusiasts get their money's worth. Sports fans can experience exciting ice hockey games of the Bavarian League in the Marco Sturm ice rink.

HS LANDSHUT LOCATION - CAMPUS LANDSHUT

HOW TO GET TO THE UNIVERSITY OF APPLIED SCIENCES

Your main campus will be in Dingolfing. The university's main campus is in Landshut though - and here are more than twelve buildings and seven parking lots, so it is easy to get lost in the beginning. Here you can find a campus plan for Landshut, so that you are well oriented from day one:



PUBLIC TRANSPORT

HOW TO MOVE AROUND DINGOLFING AND THE LANDSHUT AREA

DINGOLFING

The most important bus line for you will be Nr. 308 (RBO-Linie 6232; Landkreis Dingolfing - Nr. 11, which connects Dingolfing and Landshut. Additionally, there is an hourly train connecting the two cities.

[Here](#) you can check the schedules of all bus lines in Dingolfing, including Bus Nr. 308 (Line 11 - 6263).

The blue and red "Dingo" busses stop at the train station ("Bahnhof"). Every line stops at the city hall ("Rathaus").

To commute between Landshut and Dingolfing **we recommend the "Deutschland Ticket" for a fee of 38 Euro per month** you can use all regional transport in Germany except trains like ICE and IC.

LANDSHUT

The best way to move around Landshut is by using the bus. You can find **all bus lines and schedules** [here](#).

OTHER CITIES

If you want to visit another city like Munich, Passau, Regensburg, Freising etc., the best option will be to take the train. If you need to check the **train routes and schedules online**, you can find them [here](#).

A good alternative if you are traveling in a group is to take the **"regi-onal day ticket for Bavaria"**. [Here](#) you can find more information about this ticket.

In order to check easily the best routes by bus, train, S-Bahn, etc, it is best to download these two Apps:



[IOs](#)

[Android](#)



[IOs](#)

[Android](#)

REGARDING THE COSTS:

- With your Student ID you are entitled to use the public transportation within Landshut and the surrounding areas, and Dingolfing. Be reminded the route between Landshut and Dingolfing is not included!
- The monthly ticket for the public transportation within Dingolfing costs 16,00 €. Single ride tickets are 1,00 €.
- Otherwise, when you use public transportation outside of the covered area, you will have to buy a ticket and pay the corresponding fee, often with a student discount.
- As a student, you only have to pay a reduced price for the Deutschlandticket. As an additional advantage, Students from our university who paid the semester fee get an extra 6 € discount. You can purchase your ticket [here](#).



REGISTRATION AT THE CITIZENS' OFFICE

FIRST BUREAUCRATIC PROCESS UPON ARRIVAL



One of the first and most important tasks during your first days after arriving in Germany is the registration at the citizens' office or "Anmeldung beim Bürgerbüro".

Find further information [here](#).

In order to be able to do the registration process you need to have already:

- A valid address in Germany. Your landlord needs to provide you with a housing confirmation or "Wohnungsgeberbestätigung".
- Your certificate of enrollment or "Immatrikulationsbescheinigung". You can download it through our SSO Portal.
- A valid health insurance confirmation.
- Proof of blocked account, scholarship or otherwise enough funds to study in Germany.
- Your ID in Germany: ID card, Passport + Visa (if applicable)

If you have any questions about this procedure, you can contact the team of the Bürgerbüro responsible for the "Anmeldung". You can find their contact details [here](#).

Do not hesitate to contact us if you need any support with filling out the form or any other step of the process. The Welcome Service will be happy to help: incoming_dingolfing@haw-landshut.de

IMPORTANT:

Please note that one or two weeks after registering yourself in the citizens' office, you will receive a document with your **Tax ID** or "**Steueridentifikationsnummer**". Please keep this document in a safe place, even if you do not need it yet. This is an ID number that will identify you in Germany for the rest of your life, so if you later decide to accept a job, extend your stay in Germany, or come back in the future for a long stay, it is definitely something you will need.

VISA AND RESIDENCE PERMIT

CRITICAL STEPS TO LEGALISE YOUR STAY IN GERMANY

VISA

Once you have received the Admission Letter from Landshut University of Applied Sciences, you can apply for a student visa at the respective German embassy (if applicable). **The Visa will allow you to enter the country and ask for a residence permit once you arrive.** You can find further information [here](#).

RESIDENCE PERMIT

If you come from a country outside of the EU, you will need a residence permit or "Aufenthaltserlaubnis", which confirms the legality of your stay in Germany. It is valid generally for a limited amount of time and is usually only granted for a specific purpose of residence (like studying).

In order to request your residence permit card or "Aufenthaltstitel", you have to arrange an appointment with the foreign office or "Ausländerbehörde". In general, you need to provide them with:

- Confirmation of registration at the citizens' office or "Anmeldebestätigung" (Also called Meldebescheinigung).
- Your confirmation of matriculation or "Immatrikulationsbescheinigung". You can download it through our PRIMUSS system.
- A valid health insurance confirmation.
- Proof of blocked account, scholarship or otherwise enough funds to study in Germany.
- Rental contract ("Mietvertrag") or housing confirmation ("Wohnungsgeberbestätigung").
- Your ID in Germany: ID card, Passport + Visa (if applicable).
- Filled out form "Antrag auf Erteilung einer Aufenthaltserlaubnis"
- Recent biometric picture.

This procedure costs 100 EUR

If you need any support throughout the process, you can contact:

- The Internation Office

If you need extra support, the Welcome Service will gladly answer your questions and guide you in the right direction.
incoming_dingolfing@haw-landshut.de

- Contact the Ausländerbehörde Dingolfing:
auslaenderamt@landkreis-dingolfing-landau.de



ACCOMODATION

WHERE TO LIVE IN DINGOLFING

Whether you wish to have a space just for yourself, or to enhance your social life by living in a dorm or a shared flat, you can find the perfect solution that fits your wishes and preferences. **Please make sure to move to the closer surroundings of Dingolfing/Landshut as the public transport can sometimes be unreliable.**

The best is for you to prepare yourself with time and reserve an accommodation even before arriving in Germany, in order to find a solution that fits your needs.

Here some options:

- Housing database for private housing
- isar-campus.de/en/wohnen
- immobilienscout24.de
- immonet.de
- [Kleinanzeigen](https://kleinanzeigen.de)
- [Immobilo](https://immobilo.de)
- meinstadt.de
- [WG-Gesucht](https://wg-gesucht.de)
- wohngut.com
- facebook groups, e.g. <https://www.facebook.com/groups/immomarkt.Dingolfing>
- <https://stwno.de/en/housing/wohnanlagen-la-en>

Even though there are several options, you should keep in mind that the rooms are taken very quickly, so you should make sure to reserve yours with enough time in advance. If you are unsure about the legality of your contract please contact us.

IMPORTANT

Please keep in mind that every home in Germany has to pay a **Television and Radio fee**, regardless of whether the person actually has a television or listens to the radio. This is a general normative that everyone has to follow. Here is what you need to know:

1. Some days after you register in the Citizens' Office you will get a letter from the "Beitragsservice" explaining that you need to fill out a form and send it back to them. In the form you:
 - Clarify how often you want to pay the fee: Once every 3 months, four times per year, six months in advance, etc.
 - State how you want to pay the fee: Doing a transfer, or providing them with your bank details so that they can actively withdraw the corresponding amount when the payment is due (*we recommend you this last option, because you will not have to actively do any further procedure*).
 - Have the chance to prove that you are not required to pay the fee. This would be the case, for example, if you live with someone else in the same place and the fee is being already paid by them.
2. The monthly fee is currently 18,36 Euro.



BANK

KEEP YOUR MONEY SAFE

Especially if you come from a country outside of the EU, it is very important for you to open a German Bank account that fits your interests and needs.

BLOCKED ACCOUNT

If you need to ask for a Visa and a residence permit, you will most likely need to open a blocked account or "Sperrkonto" even before coming to Germany.

Options where you can open a blocked account:

- **Expatrio:**
Expatrio offers a practical option to open a blocked account (among [other services](#)) online, before coming to Germany. [Here](#) you can check out all the details.
- **Fintiba:**
[This](#) is another practical alternative if you need a fast solution and/ or if you know already that you would like to open a regular bank account in Germany upon arrival. They offer all information about their products in English.

REGULAR BANK ACCOUNT

You might however want to **open a regular bank account**. This could be useful for example if:

- You have opened the blocked account with Fintiba and, therefore, need to open a normal German bank account upon arrival.
- You did not need to open a blocked account because you have a scholarship or a different proof of funding that will cover your expenses in Germany, but you want to keep your money safe.

In general, you will need to provide your bank with the following information in order to open a new bank account (this can serve as a guide, but please make sure to contact the bank of your preference and ask which documents they require specifically):

- Your ID in Germany: ID card, Passport + Visa (if applicable).
- Confirmation of registration at the citizens' office or "Anmeldebestätigung" (also called Meldebescheinigung).
- Proof of blocked account, scholarship or otherwise enough funds to study in Germany.
- Perhaps Tax ID or "Steueridentifikationsnummer".



Options where you can open a regular bank account:

- **Deutsche Bank**
[Here](#) you can check important information in German, regarding the bank account options that the Deutsche Bank offers.
- **Sparkasse Niederbayern-Mitte**
Alternatively, you can also contact the [Sparkasse Niederbayern-Mitte](#), which has an [office in Dingolfing](#). However to open an account at that bank you need a person who speaks German fluently with you.
- **VR – Bank Ostbayern-Mitte eG**
[The VR – Bank](#) in Landshut has an option to open an account for students. If you want to check out this alternative, please keep in mind that all information is in German. Unfortunately, the account for students is not offered at the VR – Bank in Dingolfing, but you can view alternative offers [here](#).
- **Sparda Bank Ostbayern eG**
Similarly, the [Sparda Bank](#) also has an office in Landshut and offers an account for young people (18-26 years old). Their website shows information just in German.

Do not hesitate to contact the Welcome Service if you have any difficulties opening your bank account or if you need any further support. We are here to guide you. incoming_dingolfing@haw-landshut.de

HEALTH INSURANCE

A REQUIREMENT FOR EVERY STUDENT IN GERMANY

Every student in Germany is required to be health insured. In order to receive a certificate of enrollment you are required to have either:

Confirmation of sufficient health insurance:

This would be the case if your health insurance at home is also valid in Germany. As stated by the [DAAD](#), "This is usually the case **for public health insurances in EU member states, as well as Bosnia, Herzegovina, Iceland, Liechtenstein, Morocco, North Macedonia, Montenegro, Norway, Serbia, Switzerland, Tunisia and Turkey**. These are countries with which Germany has signed a social security agreement. Those who hold a European Health Insurance Card (EHIC) are also insured in Germany. In some circumstances, domestic and international health insurance policies from private foreign providers may also be recognised in Germany. Enquire at your health insurance provider for more information before coming to Germany".

However, if your home insurance is recognised (be it private or public) in Germany, you still have to contact a public health insurance company in Germany, so that they provide a statement confirming that your present coverage suffices in Germany.

You can contact any public health insurance in Germany to get this statement. For example:

- Techniker Krankenkasse (TK):

Lea Schwarz

Phone number: 040 - 460 65 10 41 37

Mobile phone number: 0162 - 352 29 07

Email: lea.schwarz@tk.de

- AOK Bayern Geschäftsstelle Landshut / Dingolfing:

Sandra Jäger

Email: la.gesundheit@service.by.aok.de

You can contact them and provide them with the entitlement document that you already have from your home health insurance provider. They will gladly guide you further.

Confirmation of enrollment at a German health insurance company:

If you come from a country outside of the EU and without a signed Social Security Agreement concerning health insurance with Germany, you are required to get a German health insurance. The public health insurance providers are generally the least expensive and offer students particularly affordable policies. Here you can find some options:

- AOK Bayern

[Here](#) you can check detailed information about the AOK Health Insurance and [here](#) you can find the form to become a member.

You can also communicate with the filial in Landshut:

AOK Bayern Geschäftsstelle Landshut

Luitpoldstraße 28

84034 Landshut

Phone number: 0871 6950

Email: la.gesundheit@service.by.aok.de

<https://www.aok.de/pk/bayern/>

Opening hours:

Mo - We: 8.00 am - 4.30 pm

Th: 8.00 am - 5.30 pm

Fr: 8.00 am - 3.00 pm

- Techniker Krankenkasse (TK)

You can get insured in the TK via [expatrio](#) (in English) or you can check out some useful information [here](#) on how to become a member. You can of course also communicate with the filial or go to their facility:

Am BioPark 13

93053 Regensburg

Lea Schwarz

Phone number: 040 - 460 65 10 41 37

Mobile phone number: 0162 - 352 29 07

Email: lea.schwarz@tk.de

<https://www.tk.de>

Opening hours:

Mo: 10:00 am - 2:00 pm

Tue: 11:00 am - 5:00 pm

Wed: 10:00 am - 2:00 pm

Th: 10:00 am - 3:00 pm

Fri: 10:00 am - 1:00 pm

HEALTH INSURANCE

A REQUIREMENT FOR EVERY STUDENT IN GERMANY

- BARMER

[Here](#) you can have a look at the information in English that BARMER offers to students. If you like this option, [here](#) you can find the form to become a member of the BARMER health insurance.

You can also communicate with the filial in Landshut or go to their facility:

Jessica Bertermann
Phone number: +49871/14380508
Email: jessica.bertermann@barmer.de

Markus Spickenreither
Phone number: +49871/14380539/ Whatsapp: +49151 18234295
Email: markus.spickenreither@barmer.de

Altstadt 392a
84028 Landshut
www.barmer.de

Opening hours:

Mo - Tu: 9.00 am - 5.00 pm, Wed.: 9.00 am - 1.00 pm,
Th: 9.00 am - 6.00 pm, Fr: 9.00 am - 1.00 pm

- IKK Classic

[Here](#) you can find the benefits of the IKK Classic in English and the Application Form for Students and Interns. You can also communicate with the filial in Landshut or go to their facility:

Am Alten Viehmarkt 5
City Center Landshut

Phone number: 08004551111
Email: info@ikk-classic.de
<https://www.ikk-classic.de/pk>

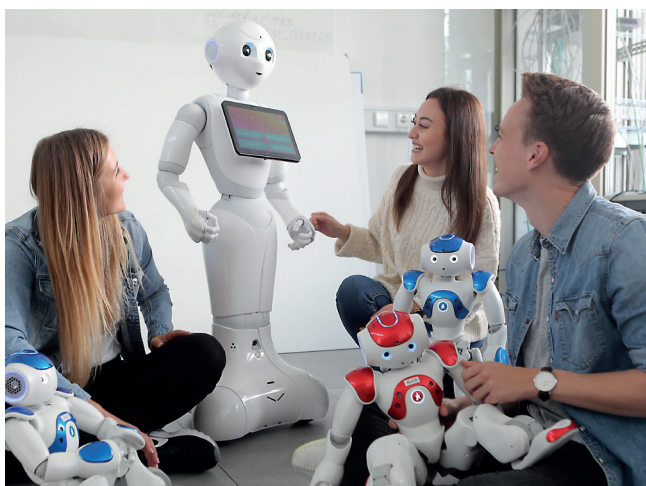
Opening hours:

Mo 9.00 am - 4.00 pm, Tu: 9.00 am – 6.00 pm, We: 9.00 am - 2.00 pm, Th: 9.00 am - 6.00 pm, Fr: 9.00 am - 2.00 pm



FINANCING OF STUDIES

FIND A SCHOLARSHIP OR A STUDENT JOB



Bundesagentur für Arbeit

Agentur für Arbeit
Landshut – Pfarrkirchen



**HOCHSCHUL
JOBBÖRSE**

SCHOLARSHIPS

HS Landshut offers currently two funding options for international students:

- Graduation scholarships STIBET.
- DAAD Price.

If you are interested in knowing more about the requirements, selection criteria, documents, deadlines and more, please check out the information we have prepared for you [here](#).

Please feel free to contact your International Office if you have further questions regarding the scholarship options, we will gladly guide you through the process.

WORK AS A STUDENT

Working as a student might be a great option for you to finance your stay in Germany. If this is your case, you must know the options, regulations, and restrictions that you need to follow. You can find some useful information [here](#).

A good place to start looking for options is the local job agency or „Agentur für Arbeit“ or local portals with mini job options, such as [minijobs.info](#). If you want to check out some information in German, you can have a look [here](#). Keep in mind that even though the online information is just offered in German, our [Career Service](#) team can also advise you in English if you need it, so do not hesitate to contact them should you have any questions or need any support with your job search.

FIRST STEPS IN THE ONLINE CAMPUS

IT BASICS TO GET STARTED

WiFi

In order to connect to the WiFi in the area TZ-Puls, you can use Eduroam (or "Educational Roaming"):

- Eduroam gives you access, not just to the HS Landshut's wireless network, but also to the wireless network of all universities. In order to log in, you just need to enter your user ID information. Please contact [Service IT](#) if you need further support.

Moodle

This is going to be a very important tool throughout your studies, where you can download course scripts, materials, homework, exercises and/or their solutions; do virtual tests (languages center, grading tests, etc.) or e-learning; and also communicate (messages) or get information/news. Some professors/tutors/lecturers even use Moodle as a notice board to inform students when lectures are cancelled.

To enter to Moodle, go to <https://moodle.HS-landshut.de>. You can also find it on the „Quick Links“ list in the homepage of [HS Landshut](#).

In Moodle you can select the language that you prefer, check some useful information in the FAQs and log into your account, using the details that you should have gotten from the Computer Center.

Accessing to the SSO Portal for the first time

All relevant information regarding the access to the SSO Portal can be found on the FAQ of the Service IT. Keep in mind that if you experience any problems or if you need support with the process, you can contact the IT Helpdesk or write an email: to ticket@HS-landshut.de

Accessing the University email

[Here](#) you can enter to the University Email, a very important communication resource with other students, professors and University staff.



STUDENT ID AND SEMESTER TICKET

ALL THE FUNCTIONS OF YOUR STUDENT ID

The student ID card is available to you for the duration of your enrolment at Landshut University and will accompany you throughout your studies. It offers the following functions:

1. Student ID with photo.
2. Semester ticket for Landshut.
 - The ticket is valid for the duration of an entire semester, including semester breaks, and entitles you to use the bus routes in the entire city of Landshut, as well as in the municipality of Kumbhausen, Markt Altdorf and Markt Ergolding as often as you wish.
 - Severely disabled people who are entitled to free travel can apply for a refund of the semester ticket fee (20€)! If this is your case, please go to Birgit Schnellinger (Social Counseling, room E010) by 15.05 (summer semester) or 15.11 (winter semester) and bring copies of:
 - your severely disabled pass.
 - your token.
 - your current matriculation certificate.
3. Library card: Please check out the section "Library system" of this student guide for more information.
4. Mensa card (Canteen Card):
 - In order to make purchases in the canteen in Landshut you have to transfer money to your student ID. Every time you do a purchase, the price will be deducted from your card's balance.
 - There are three machines where you can load money in your ID Card. They are located in the Mensa and Cafeteria area. [Here](#) you can find the current menu of the Mensa.
5. Printing cost accounting.

IMPORTANT:

You will need to **revalidate your student ID** card each semester after re-enrollment. The validation stations are located in Landshut in front of the Mensa (M-Building), in front of room C021 (C-Building) and in front of room N022 (N-Building).

In case of „Card error!“ please try validating at another validation station. If „Card error“ is also displayed there, you will need a new student ID card. You can get one at the Student Service Center in room N022.

If the card gets stuck, please contact the IT Helpdesk in room N101, N108.

Th: 9.00 am - 6.00 pm

Fr: 9.00 am - 2.00 pm



LIBRARY SYSTEM

PREPARE FOR YOUR CLASSES AND EXAMS



The library in Landshut is going to be a very important resource for you throughout your studies. Whether you want to go there to study, profit from the big database of E-Books we have, or simply borrow a book, you will find at our library everything you need in order to prepare yourself successfully for your classes and exams.

[Here](#) you can find all relevant information regarding the Library, including its opening hours, interlibrary loans and process to borrow a book, as well as clarifications about the registration and library account. You will even find the library's staff contact information, in case you have further questions or need support with any process. Do not hesitate to contact them, they will be glad to help you.

You can also borrow books from the library in Dingolfing. Details can be found at www.bibliothek-dingolfing.de. When you visit the library for the first time, you have to bring your ID card (Personalausweis) to register. The library offers English and German books and e-books, and borrowing is free of charge. A lending fee is only charged for audio books, DVDs and console games.

If you want to search for specific literature, click on "Mediensuche Online" on the right side of the website. Alternatively, you can click on this [link](#). Apart from that, the library has a copier, but you will have to pay a fee for using it.

However, please keep the library in Landshut in mind, as it may offer more subject-relevant books.



STUDENT GROUPS

A GREAT WAY TO MAKE A DIFFERENCE



STUV (STUDENT COUNCIL)

The Student Council, or STUV for short, is a collective term for the elected student representatives in the Senate, the Student Councils and the Student Convention. Every summer semester, the honorary representatives are newly elected by all students. These representatives advocate for your interests in the respective committees, actively participate in determining university policy, and additionally offer events at the university, for example through summer and winter festivals, or courses. The elected representatives are the first point of contact for you if you have problems or questions about your studies. A sympathetic ear is offered to you at any time through personal contact in the office or by mail.

Many ideas that we have had, have been implemented, such as the red seats (called Enzo) everywhere on campus, the subsidization of some student trips, WLAN expansion or the water dispensers.

So you see: If you get involved, you can make a big difference! Interesting and varied tasks are waiting for you! Stand for election in the summer semester and actively shape student life on campus and your studies as an honorary representative of your fellow students! You have the chance! Use it!

Contact us:

Email: mail@stuv.la

Phone number: 0871 506 125

Room: G0 11 (next to the Audimax)

Opening hours:

Mo: 13:50 - 14:20

Tue -Fr: 12:15 - 12:45

More information: www.stuv.la



LA-E RACING

Team facts:

LA eRacing is the student electric racing team of Landshut University. Within the framework of the international design competition "Formula Student Electric", a fully electric racing car is developed, designed and built within one year.

All constructions are largely manufactured and assembled in the club's own workshop. The software is also implemented by the team. In addition to the construction, the marketing of the racing car also plays a major role. The racing team is made up of members from all departments at Landshut University of Applied Sciences.

Benefits:

Students are given the opportunity to prove the skills they have acquired during their studies in a competition with 110 universities from 28 countries.

The intensive experience of team work as well as the application of technical and business know-how, can also be very attractive for future employers.

The teams:

The LA eRacing club is divided into individual teams with specific tasks. This structure enables each team to contribute to the common goal in a structured manner, ensuring long-term success in international competitions.

The LA-eRacing team is a group of students from all departments of the university working together on a project. The team offers everyone the chance to develop personally and to gain and deepen skills in technical and commercial areas.

All information about the team and its activities can be followed on our [website](#), on [LinkedIn](#) and [Instagram](#).

STUDENT GROUPS

A GREAT WAY TO MAKE A DIFFERENCE



CAMPUS LANDSHUT E.V.

We revitalize the campus!

Campus Landshut e.V. is a cross-faculty association that works to increase the range of leisure activities available to students and to promote greater identification with the university. In particular, we try to create a social environment for students of all faculties that offers a relaxing and sociable balance to their studies. Together we plan events such as the Bavarian Evening, the Midsemester Party, the Summer & Winter festival and the legendary May festival!

Outside of these events, members also meet regularly for internal events, such as visits to the Dult, ice skating and the like. Why become a member? With us you have the opportunity to live out your interests, meet new people and get involved in events. We can always use committed people who have fun helping out and also bring new ideas. We offer you a change to your daily study routine and you can gain skills for your later professional life. Campus Landshut e.V. is more than just a club and you are a valuable part of it!

Contact us:

Room: E1 12

Email: mail@campuslandshut.de



WINGLA

Association of German Industrial Engineers

The Association of German Industrial Engineers e.V. (VWI) was founded in 1932 with the objective of promoting industrial engineers in interdisciplinary fields of activity. It counts currently with more than 50,00 members from 52 university groups.

University group WIngLA e.V.

The team of WIngLA e.V., is one of the largest university groups of the Association of German Industrial Engineers in Germany with currently 180 members and a 13-year history. Together, we actively shape campus life and organize various seminars, excursions and parties for the students of Landshut University. Our wide portfolio includes company visits (e.g. BMW, Dräxlmeier, Lindner Group, E.ON-KKI), supra-regional events offered by other universities, social events such as the Summer & Winter Festival, Night of the Profs, Campus Football Tournament, Campus Beer Garden, and the legendary Semester Opening Party.

In addition, we host events organized by the VWI umbrella organization. These include the VWI Kreati, a nationwide competition in which real or fictitious problems are worked on in teams. Or the VWI 5-Kampf: During this four-day event, university group teams from all over Germany compete in five different disciplines (Fun, Economy, Creativity, Technic and Sports) for the title of winner. The entire rally is all about group dynamics reinforcement and having fun together on a competitive level.

Do you want to know more?

Just come by our office (E1 05) - we are looking forward to meeting you!

STUDENT GROUPS

A GREAT WAY TO MAKE A DIFFERENCE



MHV "SELAM"

Who are we?

The Muslim University Association "Selam" is an association that represents the interests of Muslim students at Landshut University. It serves as a contact point for questions concerning Islam at the university. Thus, "Selam" contributes to building bridges between cultures, religions and world views.

What do we want?

The purpose of the MHV Selam is the promotion of the Islamic practice of faith, the equality of all students at the University of Applied Sciences Landshut and the effort to reduce existing prejudices about Islam. These purposes are accomplished by:

- The realization of subject-related lectures, as well as the transfer of current and general knowledge to the members and the creation of common meeting areas.
- Enabling offers in the fields of social services, public relations, education, culture, leisure time, sports and travels.
- Offering a central point of contact for uncertainties.
- Providing advice and support for all students, in particular for first-semester students on all aspects of their studies.

We are always available to answer questions.
Everyone is welcome, regardless of religion, nationality or gender.

First contact person: Esra

Contact us via [Instagram](#) or email: selam.HS_landshut@gmail.com

SPORTS OFFER

STAY FIT AND ENJOY YOUR FREE TIME



You will have plenty of opportunities to play sports and keep yourself active at Hochschule Landshut. The sports program is part of the ZHS – “Zentraler Hochschulsport in München”, which means that you can explore options not just at our Campus, but also in München, Freising or Triesdorf, among others. This can also be a great way to meet new people with your same interests!

[Here](#) you can find all relevant information, including an overview of the offer at our campus, the link to the full program of the ZHS and the details of the contact person that will help you in case you have any further questions. Of course, if you need further support please feel free to contact your International Office.

SPORTS OFFER

STAY FIT AND ENJOY YOUR FREE TIME

Dingolfing offers many possibilities for doing sports. You can join different clubs at the TV Dingolfing such as badminton, basketball, boxing, dance sports, handball, Ju-Jitsu, athletics, fitness & children's sports, table tennis, volleyball, and shooting clubs. Besides that, you can play soccer, ice hockey, and tennis. An overview of all clubs can be found [here](#).

These are additional ideas about what you can do in your leisure time in Dingolfing:

- Skating at one of the best skateparks in Germany (1300 square meters)
- Spending time at the Isar-Wald Stadium which has athletics facilities, three grass playing fields, an artificial turf field, and beach volleyball courts. (By the way, motorcycle and horse races as well as car speed races take place on the sand track of the Isar-Wald Stadium every year)
- Working out at the gyms [CheckPoint Fitness](#) and [Cleverfit](#)
- Going for a walk and cycling next to the river Isar
- Eating and drinking next to the Isar in [Sabine's Isar Hütt'n](#)
- Going to the sauna and swimming in the public swimming pool called [Caprima](#)
- Ice skating and playing curling in the winter or playing roller field hockey in the summer at the ice arena [Marco-Sturm-Eishalle](#)
- Climbing a wall with rope safety and bouldering in the [DAV climbing hall](#)

[Here](#) you can find more information about restaurants, medical care, mobility, activities, administration, shopping, and work in Dingolfing.



LANGUAGE COURSES

IMPROVE YOUR LANGUAGE SKILLS

The University Landshut has a large offer of language courses for its students. Whether you plan to improve your German skills, to strengthen your English proficiency or to start familiarizing yourself with a new language, you will find an interesting option at our Languages Center.

Its 22 language lecturers are highly trained native speakers who teach with enjoyment and dedication. You can choose from different languages and over 90 different courses!

The Languages Center will also be pleased to advise you in person so that your language program best fits your professional and personal needs.

Currently the Languages Center offers these languages:

- Chinese
- German as a foreign language
- German Sign Language
- English
- French
- Italian
- Japanese
- Russian (as foreign language and language of origin)
- Spanish
- Turkish (as foreign language and language of origin)

[Here](#) you can visit our Languages Center page and check out in detail all the offered courses.



PROGRAMS FOR INTERNATIONAL STUDENTS

MAKE THE BEST OUT OF THIS EXPERIENCE

We really want you to enjoy the Campus life in Landshut and make the best out of it! That is why we have prepared a number of initiatives to support you, and to make your time at our Campus as nice and fun as possible.

These are the services for our International Students in a nutshell:

WELCOME SERVICE

Whenever you feel lost, you have a problem you do not know how to solve, or you simply have a question regarding your stay in Germany, just come by to our Welcome Service during the opening hours or arrange a meeting with us. We will be happy to give you support, and guide you in the right direction, so that you can have a fulfilling time in Landshut.

Our Welcome Service is in room T119.

Opening hours:
Tuesday to Thursday

WELCOME WEEK

Prior to the beginning of the semester, we invite our international students to our Welcome Weeks. These days are a lot of fun and help you get settled in Landshut.

During the Welcome Weeks and also during the semester you will have time to immerse yourself in all aspects of student life. There are student groups, sporting teams and an enviable social and events calendar.

The International Office as well as the student clubs organise cultural activities throughout the semester to help students take advantage of everything Landshut and its surroundings have to offer. Furthermore, we offer language partnerships, intercultural dinners, and much more.

BUDDY PROGRAMME

The „[Buddy Programme](#)“ at Landshut University of Applied Sciences is organised by the International Office with the help of local students. You will be partnered with a Landshut-based student who will support you to organize your stay before your arrival and will help you through your first steps living in Landshut, once you are here. Their support will help you to have a great start into this new experience and will give you all the tools you need, to enjoy and make the best out of your time in Landshut.

The aim of the program is to help you mingle with students from Landshut as well as other international students from all over the world. Your „Buddy“ will pick you up after your arrival, show you around and offer assistance while living in Germany. If you wish to have a Buddy, just fill in the registration form for the „Buddy Program“.

TANDEM PROGRAM

If strengthening your language skills is one of your goals while living in Germany, getting a Tandem Partner can be an excellent option for you. This program will allow you not just to get to know and help new people that are interested in your language, but also to improve your skills in the language of your interest by using it actively with a native speaker. By doing this, you can also get new friends while getting to know your partner's culture in a very organic way.

The goal of this program is to pair students that can support each other in their language learning process, in an independent and self-structured way. If you want to learn more about the Tandem Program, feel free to contact the International Office or the Languages Center.

EVENTS AND TRIPS

The International Ressort of our Student Council organizes regular events and day trips. These are the perfect opportunity to travel, get to know other students that enjoy a chill and international atmosphere, and to share each other's experiences. Come along and let's share a nice time together!

Upcoming events will be shared on the Ressort's Instagram:



@STUVLA_IR

EVENTS IN LANDSHUT

STAY INFORMED AND HAVE FUN!



There are always events and activities happening both at the University and in the City. Whether you are interested in cultural activities and sports, or in social events and shopping, you will find something interesting to be part of! We highly recommend you to check regularly the upcoming events at the University, you will most likely find something of your interest that will enable you to meet new people, have new experiences and discover more about Landshut and the

University life!



- Here you can check information about the events organized by the student groups of our University.
- You can also see the upcoming events in the websites of the Student Group of your interest. Please visit the "Student Groups" section of this guide for more details.
- If you want some inspiration on free time activities in Landshut, you can check [here](#).
- [Here](#) you can have a look at the events calendar of Dingolfing.

EVENTS IN DINGOLFING

STAY INFORMED AND HAVE FUN!

EVENTS

In Dingolfing, there are many events which are loved by both young and old people. You will find some examples in the following list:

- [Carnival parade in Teisbach](#): on Carnival Sunday (it is the largest carnival parade in Eastern Bavaria)
- [Mittefastenmarkt](#): a market taking place on the third and fourth Wednesday after Ash Wednesday
- [Dingfest](#) (10-day open-air festival): is held every two years and coincides with the World Cup and European Championship
- [Fishermen's Festival](#): Friday to Monday after the first Sunday in August
- [Half Marathon](#) of Dingolfing: takes place every year in September
- [Kirchweih Volksfest](#) (also called Dingolfinger Kirta): from Friday to Wednesday on the 3rd weekend of October

If you are looking for additional events, you can check out the following websites. Of course, you can also participate in the events of Landshut!

Events in Dingolfing:

- <https://www.dingolfing.de/freizeit-und-tourismus/tourismus/veranstaltungen>

Events near Dingolfing:

- <https://www.ferienland-dingolfing-landau.de/veranstaltungen>

Events in Landshut:

- <https://landshut.de/kultur-sport/veranstaltungskalender>

NIGHTLIFE

If you want to meet new people or have a good time with your friends in the evening, you can go to the bars [Bel Air](#), [Adebar](#), [Cantina Diablos](#), [Isar Hütt'n](#).

RECREATION AND CULTURE

If you are wondering what to do after the lectures, Dingolfing offers a wide variety of leisure activities. There is always something to do, regardless of the season and the weather.

You can spend time at the sports facilities of the city (for example [Starlight Bowling Landau](#), the [ice arena](#) or the [swimming pool Caprima](#)). If you want to spend the day relaxing, we can recommend the cinema [Filmpalais](#).

At the same time, the city also offers opportunities to further educate yourself in your free time: If you want to learn more about the German culture, feel free to go to the Dingolfing [City Hall](#) (Stadthalle), the [Herzogsburg](#) or the [Bruckstadel](#), where you can attend concerts, cabaret, and exhibitions. You can also contact the [Dingolfing Music School](#) if you would like to play a new instrument. The [VHS Dingolfing](#) offers courses in languages, culture, and sports. At [Dahoam in Niederbayern](#), you can find various clubs which are always happy about new members. If you find an interesting club, don't be afraid and feel free to sign up. They are looking forward to you!

Finally, there is the app "Dingolfinger Stadtexplorer" in which you can explore the city in more detail.

LIFE IN DINGOLFING

The city of Dingolfing has many stores and restaurants to offer, as well as nature and sights. You can go dining and shopping at the Marienplatz Dingolfing or buy food at the [weekly market](#) ("Wochenmarkt"), which also takes place at the Marienplatz on Tuesdays and Fridays. In addition, various products can be purchased at the marketplace "[Mittefastenmarkt](#)" in March.

If you want to enjoy nature, there is the possibility to go hiking or cycling. More information about popular routes is available at the Bruckstadel Dingolfing or [here](#). If you want to explore Dingolfing like a tourist, you can check out the following sights: the castle Herzogsburg, the tower Stinkerturm, the tower Storchenturm, and the city walls. Additional information about the sights is offered by the Bruckstadel in Dingolfing and [here](#).

HOCHSCHULE LANDSHUT

Hochschule für angewandte Wissenschaften

Am Lurzenhof 1

84036 Landshut

Tel. +49 (0)871 - 506 0

Fax +49 (0)871 - 506 506

info@haw-landshut.de

www.haw-landshut.de