



STUDENT GUIDE

FOR INTERNATIONAL STUDENTS IN DINGOLFING



Welcome to Landshut University of Applied Sciences and to the TZ PULS in Dingolfing!

This guide is designed to help you start your student life in Germany smoothly and confidently.

Inside, you'll find valuable information about living in Dingolfing, navigating bureaucratic procedures, exploring university services, joining student groups, and much more.

STUDENT GUIDE

INDEX

Starting a new chapter in a different country can feel both exciting and challenging.

To support you on this journey, we've created a practical guide designed to help you settle in smoothly.

Inside, you'll find helpful information on:

1. Campus location in Dingolfing and Landshut
2. Public transport
3. Registration at the Citizens' Office
4. Visa / residence permit
5. Accommodation
6. Bank
7. Health insurance
8. Financing of studies
9. First steps in the online campus
10. Student ID and semester ticket
11. Library system
12. Student groups
13. Sports offer
14. Language courses
15. Programs for international students
16. Events

We wish you a successful and enriching experience at the University of Applied Sciences and hope you enjoy your time in Dingolfing!

If you have any further questions or need clarification, please don't hesitate to contact us, we'll be happy to assist you.

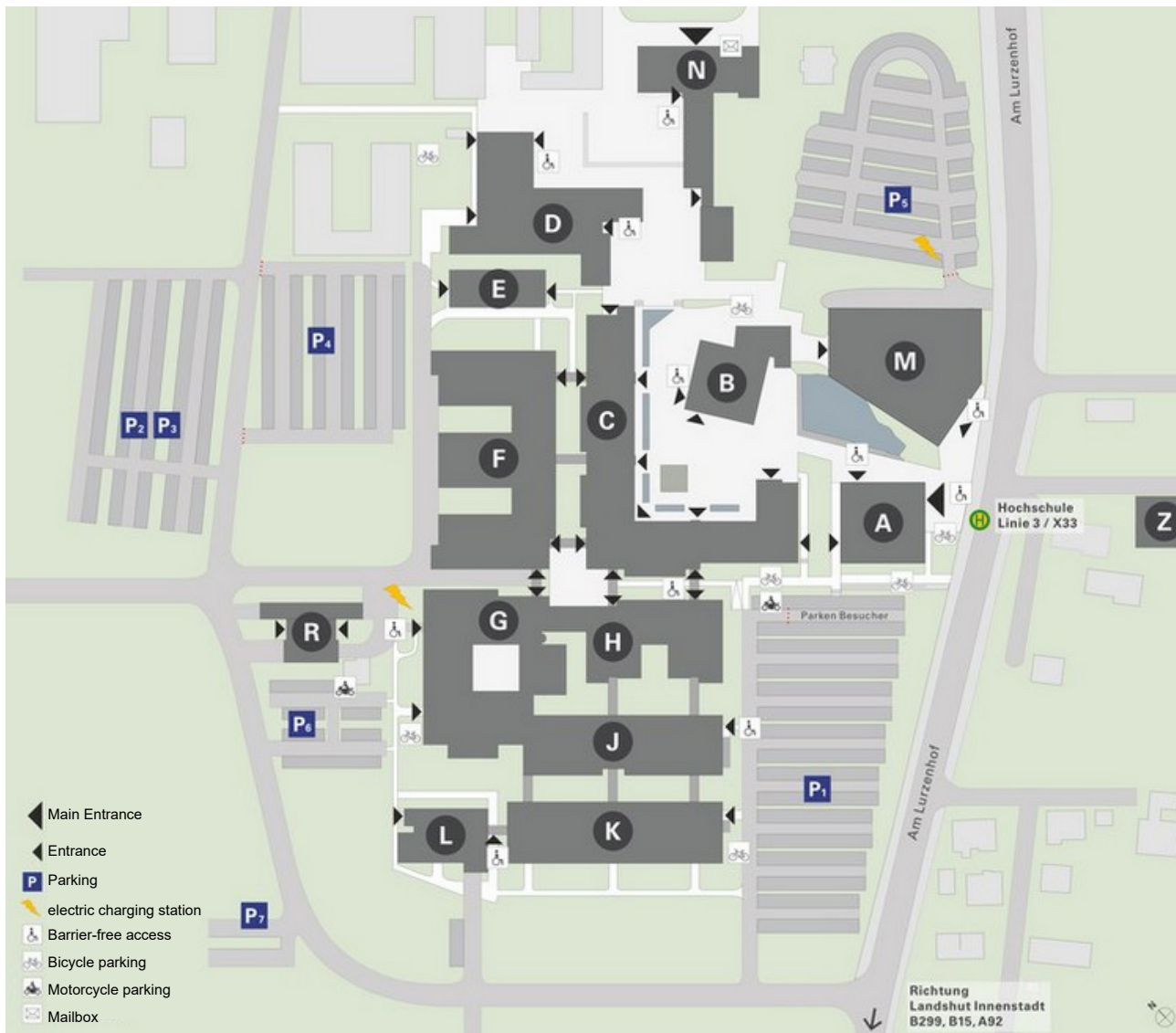
E-Mail: incoming_dingolfing@haw-landshut.de



1. CAMPUS LOCATION LANDSHUT

Hochschule Landshut - University of Applied Sciences
Am Lurzenhof 1
84036 Landshut

Your main campus will be in Dingolfing, the university's main campus is in Landshut though. The official start of studies and day 1 will be at Dingolfing campus! On day 2 we will jointly visit Landshut campus. However, for immatriculation etc. you might need this map already in advance before official start of studies.



Faculties

Business Administration
Electrical Engineering and Industrial Engineering
Computer Science
Interdisciplinary Studies
Mechanical Engineering
Social Work

Building

A
C
J
C
C
D

Food and drink

Canteen
Cafeteria
Coffee bar

Building

M
G
B

University management/administration

Student Service Center (SSZ) + Info Point
Central Student Advisory Service & Career Service
International Office (IO)
IT Service/Helpdesk

Building

N
N
N
N

Library
Campus Nest
Post office

Building

B
Z
N

1. CAMPUS LOCATION DINGOLFING „TZ PULS“

TZ PULS of Landshut University of Applied Sciences
Bräuhausgasse 33
84130 Dingolfing



[Here](#) you can find a campus 360 degree tour, so that you can be well oriented from day one.

Discover Dingolfing - A place full of opportunities!

Experience the annual Dingolfing „Kirta“ folk festival with marquees, rides, and delicious chocolate fruits. Another highlight is the „Adebar“ in Dingolfing's center. This rooftop bar spoils you with drinks and offers you and your fellow students the perfect location to end a productive day in a relaxed atmosphere. An absolute must for students.

Enjoy the skate park and the popular beach bar „Sabine's Isar Hütt'n“ directly next to the Isar. In summer, you can refresh yourself at the „Mossandlweiher“ or all year long, the famous „Erlebnisbad CAPRIMA“ awaits you.

For bike lovers, there are challenging downhill trails and picturesque bike paths along the Isar. In the „DAV Kletterzentrum Dingolfing“, bolder and climbing enthusiasts get their money's worth. Sports fans can experience exciting ice hockey games of the Bavarian League in the Marco Sturm ice rink.



2. PUBLIC TRANSPORT

Dingolfing

The most important bus line for you is **Line 308** (RBO Line 6232 / District of Dingolfing – Line 11), which provides a direct connection between Dingolfing and Landshut. In addition, there is an hourly train service between the two cities, the RE 3 line, that runs between Munich and Passau.

The blue and red “Dingo” buses stop at the train station („Bahnhof“). Every line also stops at the city hall („Rathaus“).

[Here](#) you can check the schedules of all bus lines in Dingolfing.

For commuting between Landshut and Dingolfing, we recommend the „Deutschland-Ticket“. For €58 per month, it allows you to use all regional public transport throughout Germany – excluding long-distance trains such as ICE and IC.

You can find more information on the Deutschland-Ticket [here](#).



In order to check easily the best routes by bus, train, S-Bahn, etc, it is best to download these two Apps:



If you want to visit another city like Munich, Passau, Regensburg, Freising, etc., the best option is to take the train.

If you want to check the train routes and schedules online, you can find them [here](#).

2. CAMPUS LOCATION LANDSHUT / PUBLIC TRANSPORT

Hochschule Landshut
Am Lurzenhof 1
84036 Landshut

The most important bus line for you is Line 3.

If you take this bus in the direction of „Auloh“, it will take you to the University as well as the student residences on Ritter-von-Schoch-Straße and Bürgermeister-Zeiler-Straße.

In the opposite direction, towards „Wolgangsiedlung“, the bus connects the University with the historic city center (Altstadt).

You can find all bus lines and schedules [here](#).

A good alternative if you are traveling in a group is to take the „regional day ticket for Bavaria“.

[Here](#) you can find more information.



Regarding the costs

With your student ID, you are entitled to use public transportation within the city of Landshut, its surrounding areas, and within Dingolfing.

Please note: The route between Landshut and Dingolfing is not included in this coverage.

For travel outside the covered area, you will need to purchase an additional ticket. In many cases, student discounts are available.

As a student, you are eligible for a reduced fare on the Deutschlandticket. Furthermore, students enrolled at our university who have paid the semester fee receive an additional €6 discount. You can purchase your ticket [here](#).

3. REGISTRATION AT THE CITIZENS' OFFICE

„Anmeldung beim Bürgerbüro“

One of the very first and most important tasks you'll need to complete after your arrival in Germany is registering your address at the local citizens' office, known as the „Bürgerbüro“.

You can find further details about this process on the official website of the citizens' office.

To complete this registration, you'll need the following documents:

- **A valid address in Germany**
Your landlord must provide you with a housing confirmation („Wohnungsgeberbestätigung“).
You can find this form on the citizens' office [website](#)

If you're living in university dormitories, the Studentenwerk will issue this document for you.
- **Certificate of enrollment**
(„Immatrikulationsbescheinigung“)
You can download this through our PRIMUSS system.
- **Proof of valid health insurance**
- **Valid identification for Germany**
This includes your national ID card or passport, and visa if required.
- **Completed registration form**
(„Anmeldung bei der Meldebehörde“)
This form is also available on the citizens' office website under „Informationen zur Anmeldung & Ummeldung“ > „Formulare“.
- **Proof of sufficient financial resources**
Such as a blocked account confirmation, scholarship certificate, or other financial documentation (if applicable).



IMPORTANT:

One to two weeks after registering at the citizens' office, you will receive your **Tax ID (Steueridentifikationsnummer)** by post.

Please keep this document safe - it is your lifelong tax identification number in Germany and will be required if you work, extend your stay, or return in the future.

4. VISA & RESIDENCE PERMIT

Important steps to legalise your stay in Germany



Visa

After receiving your Admission Letter from Landshut University of Applied Sciences, you can apply for a student visa at the German embassy.

The visa allows entry to Germany, where non-EU students must apply for a residence permit to study legally. ("Aufenthaltserlaubnis")

You can find further information [here](#)

Registration rules:

EU citizens

Only need to register at the local registration office; no further steps required

Third-country nationals with study rights from another EU country

Can stay up to 360 days (if BAMF notified) or 90 days without a German residence permit

Non-EU residents

Need a study visa from the German embassy, usually valid for the exchange semester. Longer stays require timely registration at the Foreigners' Office ("Ausländerbehörde")

To apply for your **residence permit** ("Aufenthaltstitel"), you must schedule an appointment with the Foreigners' Office ("Ausländerbehörde").

In general, you need to provide them with:

- Registration confirmation („Anmeldebestätigung“)
- at the citizen's office
- Enrollment certificate (via PRIMUSS)
- Valid health insurance proof
- Proof of funds (blocked account, scholarship, etc.)
- Rental contract or housing confirmation
- ID (ID card, passport + visa if applicable)
- Completed application form ("Antrag auf Erteilung einer Aufenthaltserlaubnis")
- Recent biometric photo
- Fee: 100 EUR.



5. ACCOMMODATION

in Dingolfing and the surrounding area



Whether you prefer having your own space or want to boost your social life by living in a dorm or shared flat, there are options to match your preferences.

We recommend looking for accommodation in or near Dingolfing or Landshut, as public transportation in the area can be infrequent and may not always fit commuting schedules.

Even though there are several options, you should keep in mind that the rooms are taken very quickly. You should make sure to reserve yours with enough time in advance to ensure you find something that suits your needs.

Here are some useful websites:

- [isar-campus.de](https://www.isar-campus.de)
- [immobilienscout24.de](https://www.immobilienscout24.de)
- [immonet.de](https://www.immonet.de)
- [Kleinanzeigen](https://www.kleinanzeigen.de)
- [Immobilio](https://www.immobilo.de)
- [meinestadt.de](https://www.meinestadt.de)
- [WG-Gesucht](https://www.wg-gesucht.de)
- facebook groups, for example [Dingolfing](https://www.facebook.com/Dingolfing)

If you are unsure about the legality of your contract please contact us.

IMPORTANT:

Every household in Germany must pay the **Television and Radio fee** – regardless of whether they use TV or radio.

After registering at the Citizens' Office, you will receive a letter from the „Beitragsservice“ asking you to fill out a form:

- Choose how often you want to pay: once every 3 months, four times per year, six months in advance, etc.
- Choose a payment method (direct debit is easiest).
- Exemption is possible if someone else in the household already pays the fee.

The current fee is €18.36 per month.

6. BANK

Blocked account / Regular account

If you are coming from a non-EU country, it is especially important to open a German bank account that suits your needs.

Blocked account

If you need to ask for a Visa and a residence permit, you will most likely need to open a blocked account or “Sperrkonto” even before coming to Germany.



Options where you can open a blocked account:

• **Expatrio**

Expatrio offers a practical option to open a blocked account (among other services) online, before coming to Germany. [Here](#) you can check out all the details.

• **Fintiba**

[Here](#) you can find another practical alternative if you need a fast solution and/or if you know already that you would like to open a regular bank account in Germany upon arrival. They offer all information in English about their products.

6. BANK

Blocked account / Regular account

Regular bank account

If you want to open a regular bank account, this could be useful if you...

...have opened the blocked account with Fintiba, and therefore need to open a normal German bank account upon arrival.

...did not need to open a blocked account because you have a scholarship or a different proof of funding that will cover your expenses in Germany, but you want to keep your money safe.

Options where you can open a regular bank account:

- Deutsche Bank
- Sparkasse Landshut
- VR – Bank Landshut eG:
The VR – Bank also has an option to open an account for students. If you want to check out this alternative, please keep in mind that they have all their information in German.
- Sparda Bank Ostbayern eG:
Similarly, the Sparda Bank also has an office in Landshut and offers an account for young people (18-26 years old). Their website shows information just in German.



In general, you will need to provide your bank with the following information in order to open a new bank account: (please make sure to contact the bank of your preference)

- Your ID in Germany: ID card, Passport + Visa (if applicable)
- Confirmation of registration at the citizens' office ("Anmeldebestätigung" or „Meldebescheinigung“)
- Proof of blocked account, scholarship or otherwise enough funds to study in Germany
- Eventually Tax ID ("Steueridentifikationsnummer")

7. HEALTH INSURANCE

A requirement for every student in Germany

Every student in Germany is required to be health insured. In order to receive a certificate of enrollment you are required to have either:

Confirmation of Sufficient Health Insurance Coverage

Health insurance is considered sufficient if your current insurance from your home country is also valid in Germany. According to the [DAAD](#), „This is generally the case for public health insurance from EU member states as well as from countries with which Germany has concluded a social security agreement, such as Bosnia and Herzegovina, Iceland, Liechtenstein, Morocco, North Macedonia, Montenegro, Norway, Serbia, Switzerland, Tunisia, and Turkey.“

Holders of a European Health Insurance Card (EHIC) are also covered in Germany. In some cases, private domestic or international health insurance policies may be recognized as well. Please check with your health insurance provider in advance to confirm whether your coverage is valid in Germany.



IMPORTANT:

Even if your insurance (public or private) is recognized in Germany, you are still required to contact a German public health insurance provider.

They will issue an official confirmation that your existing health insurance meets the requirements for your stay in Germany.

You can contact any public health insurance provider in Germany to obtain this confirmation. For example:

• Techniker Krankenkasse (TK): Lea Schwarz
Phone number: 0162 - 352 29 07
Email: lea.schwarz@tk.de



For more information, please visit the following [link](#) or scan the QR code

• AOK Bayern Geschäftsstelle Landshut / Dingolfing: Sandra Jäger
Phone number: 0871 - 695 249
Email: la.gesundheit@service.by.aok.de

7. HEALTH INSURANCE

A requirement for every student in germany

Confirmation of enrollment at a German health insurance company:

If you come from a country outside of the EU and without a signed Social Security Agreement concerning health insurance with Germany, you are required to get a German health insurance. The public health insurance providers are generally the least expensive and offer students particularly affordable policies.

Here you can find some options:

- **AOK Bayern**

You can find detailed information about AOK health insurance [here](#), including the application form for becoming a [member](#).

Contact:

AOK Bayern
Luitpoldstraße 28
84034 Landshut
Phone: +49 871 6950
Email: la.gesundheit@service.by.aok.de
Website: www.aok.de/pk/bayern

Opening hours:

Monday to Wednesday: 8:00am – 4:30pm
Thursday: 8:00am – 5:30pm
Friday: 8:00am – 3:00pm

- **IKK Classic**

[Here](#) you can find the benefits of the IKK Classic.

Contact:

IKK Classic
Am Alten Viehmarkt 5
City Center Landshut
Phone number: 08004551111
Email: info@ikk-classic.de

Opening hours:

Monday: 9.00am - 4.00pm
Tuesday: 9.00am – 6.00pm
Wednesday: 9.00am - 2.00pm
Thursday: 9.00am - 6.00pm
Friday: 9.00am - 2.00pm

- **Techniker Krankenkasse (TK)**

Useful information on how to become a TK member is available on their [website](#).

Contact:

Techniker Krankenkasse (TK)
Am BioPark 13
93053 Regensburg
Phone: +49 40 460 65 10 41 37
Website: www.tk.de

Opening hours:

Monday: 10:00am – 2:00pm
Tuesday: 11:00am – 5:00pm
Wednesday: 10:00am – 2:00pm
Thursday: 10:00am – 3:00pm
Friday: 10:00am – 1:00pm

- **BARMER**

[Here](#) you can have a look at the information in English at Barmer

Contact:

BARMER
Altstadt 392a
84028 Landshut

Jessica Bertermann
Phone number: +49871/14380508
Email: jessica.bertermann@barmer.de

Opening hours:

Monday to Tuesday: 9.00am - 5.00pm
Wednesday: 9.00am - 1.00pm
Thursday: 9.00am - 6.00pm
Friday: 9.00am - 1.00pm

8. FINANCING OF STUDIES

Scholarships & students jobs

Scholarships:

HS Landshut offers currently two funding options for international students:

- Graduation scholarships STIBET
- DAAD Price

If you are interested in knowing more about the requirements, selection criteria, documents, deadlines and more, please check out the information we have prepared for you [here](#).

Please feel free to contact your International Office if you have further questions regarding the scholarship options, we will gladly guide you through the process.



Work as a student:

Working as a student might be a great option for you to finance your stay in Germany. If this is your case, you must know the options, regulations, and restrictions that you need to follow. You can find some useful information [here](#).

A good place to start looking for options is the local job agency or „[Agentur für Arbeit](#)“ or local portals with mini job options, such as [minijobs.info](#). If you want to check out some information in German, you can have a look here.

Keep in mind that even though the online information is just offered in German, our [Career Service team](#) can also advise you in English if you need it, so do not hesitate to contact them should you have any questions or need any support with your job search.

Additionally, the university landshut also offers a Study&Work Program that connects international students with local companies for part-time jobs, internships, or thesis projects.

It's a great way to gain experience and build your career. For more information, contact the Welcome Service in Dingolfing or come by the office (Room T119)



HOCHSCHUL
JOBBÖRSE



Bundesagentur für Arbeit

Agentur für Arbeit
Landshut – Pfarrkirchen

9. FIRST STEPS IN THE ONLINE CAMPUS

IT basics to get started



Wifi

In order to connect to the WiFi you can use Eduroam. In order to log in, you just need to enter your user ID information. If you need further support click [here](#).

Moodle

Moodle is an essential platform throughout your studies at HS Landshut. You can access course materials, homework, solutions, e-learning content, and take virtual tests (e.g., language center exams).

It also serves as a communication tool and information board, some lecturers post updates or cancellations there.

Access Moodle at:

<https://moodle.haw-landshut.de/> or via "Quick Links" on the [university homepage](#).

SSO Portal

Access SSO at:

<https://idpsso.haw-landshut.de/idp/profile/SAML2/Redirect/SSO?execution=e5s1> or via "Quick Links" on the [university homepage](#). All relevant information regarding the access to the SSO Portal can be found on the [FAQ](#).

University email

[Here](#) you can find the FAQ regarding setting up your email account.

10. STUDENT ID & SEMESTER TICKET

All the important functions of your student ID

Your student ID card will be issued to you for the entire duration of your enrollment at Landshut University and will serve as a multifunctional companion throughout your studies.

It includes the following features:

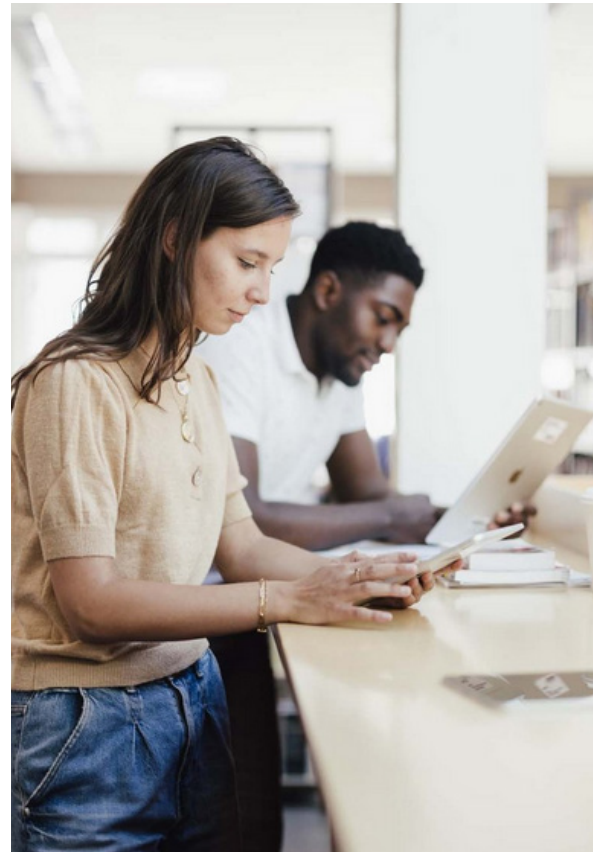
1. Official Student Identification
Includes your photo and verifies your student status.
2. Semester Ticket for Landshut & Dingolfing
 - Valid for the entire semester, including breaks.
 - Allows unlimited travel on all bus routes within the city of Landshut, as well as in Kumhausen, Markt Altdorf, and Markt Ergolding.
 - Students with severe disabilities who are entitled to free public transport may apply for a refund of the semester ticket fee (€20).

If this applies to you, please contact Birgit Schnellinger (Social Counseling, Room E010) by May 15 (summer semester) or November 15 (winter semester), and bring copies of:

- Your disability ID card
- Your travel token
- Your current certificate of enrollment

3. Library Card
Your student ID also serves as your library card. For details, please refer to the "Library System" section of this guide.

4. Mensa (Canteen) Card
To pay for meals at the campus canteen, you need to load money onto your student ID card. Each purchase will be deducted from your card's balance.
There are three top-up machines located in the Mensa and cafeteria area. You can also check the current menu [here](#).



Important:

You will need to revalidate your student ID card each semester after re-enrollment. The validation stations are located in Landshut in front of the Mensa (M-Building), in front of room C021 (C-Building) and in front of room N022 (N-Building).

In case of „Card error!“ please try validating at another validation station. If „Card error“ is also displayed there, you will need a new student ID card. You can get one at the Student Service Center in room N022.

If the card gets stuck, please contact the IT Helpdesk in room N101, N108.

Th: 9.00 am - 6.00 pm

Fr: 9.00 am - 2.00 pm

11. LIBRARY SYSTEM

in Landshut and Dingolfing

The library in Landshut will be an essential resource throughout your studies.

Whether you're looking for a quiet place to study, access to a vast database of e-books, or simply want to borrow physical books, the library provides everything you need to prepare effectively for your classes and exams.

On the library's [website](#), you'll find all the important information, including opening hours, how to borrow books or request interlibrary loans, and how to register and manage your library account.

You'll also find contact details for the library staff, who are happy to assist you with any questions or issues - don't hesitate to reach out to them.



In addition, you can borrow books from **the public library in Dingolfing**.

When visiting for the first time, bring your ID card („Personalausweis“) to register. The Dingolfing library offers books and e-books in both English and German, and borrowing is free of charge - only audio books, DVDs, and console games may incur a lending fee.

If you're searching for specific materials, click on „Mediensuche Online“ on the right side of the Dingolfing library website, or use the direct link provided [here](#). The library also has a copier available for a small fee.

Visit www.bibliothek-dingolfing.de for more information.

Still, keep the Landshut library in mind, as it often provides a broader selection of subject-specific academic resources.

12. STUDENT GROUPS

A great way to connect



Contact:

Email: mail@stuv.la

Phone number: 0871 506 125

Room: G0 11 (next to the Audimax)

Opening hours:

Mo: 13:50 - 14:20

Tue-Fr: 12:15 - 12:45

For more information: www.stuv.la

STUV - Student Council

The Student Council (STUV) represents all students at Landshut University through elected members in the Senate, Faculty Student Councils, and the Student Convention. New representatives are chosen every summer semester by the student body.

We advocate for your interests in university decision-making and help shape academic life and campus culture. Beyond politics, we organize events like the Summer & Winter Festivals, Midsemester Parties, and student workshops, creating opportunities to connect, relax, and grow.

We're also your first contact for questions or problems related to your studies - always available in our office or by email.

STUV has helped make many improvements on campus, including:

- The popular red Enzo seats
- Subsidized student trips
- Wi-Fi upgrades
- Water dispensers across campus

Why get involved?

As a representative, you'll gain valuable experience, meet motivated people, and make a real difference. If you want to improve student life and develop new skills, stand for election in the summer semester.

This is your chance - take it!

12. STUDENT GROUPS

A great way to connect



LA-E Racing

LA eRacing is Landshut University's student team for the international „Formula Student Electric“ competition.

Each year, they design, build, and program a fully electric race car, mostly in their own workshop. Marketing is also a key part of the project.

The team includes students from all departments and is divided into specialized sub-teams for efficient collaboration.

Members gain hands-on experience, apply their technical and business knowledge, and improve teamwork - skills that are highly valued by future employers.

All information about the team and its activities can be followed on our [website](#), [LinkedIn](#) and [Instagram](#).



WingLA e.V.

Association of German Industrial Engineers (VWI)

Founded in 1932, VWI promotes industrial engineers across interdisciplinary fields and includes over 50,000 members from 52 university groups.

University Group WingLA e.V.

WingLA e.V., with 180 members, is one of the largest VWI university groups in Germany. We enrich campus life at Landshut University through seminars, company visits (e.g. BMW, E.ON), social events like the Summer Festival and Semester Opening Party, and national VWI competitions such as Kreati and the 5-Kampf. These activities combine fun, teamwork, and professional development.

For more information check out our [homepage](#), [Instagram](#) or visit us at our office E1 05.

12. STUDENT GROUPS

A great way to connect



**Selam | Muslimische
Hochschulvereinigung
Landshut**

MHV „SELAM“

The Muslim University Association „Selam“ represents Muslim students at Landshut University and serves as a contact point for questions about Islam.

We aim to build bridges between cultures, religions, and worldviews.

Our Goals:

We promote Islamic faith, equality among students, and help reduce prejudice through:

- Lectures and knowledge-sharing events
- Activities in culture, education, sports, and social services
- Support and advice for all students, especially first-years
- A welcoming space for exchange and community

Everyone is welcome - regardless of religion, nationality, or gender.

Contact us via [Instagram](#), [Facebook](#) or write an email to:
selam.hs.landshut@gmail.com



Campus Landshut e.V.

Campus Landshut e.V. is a cross-faculty student association that brings life to campus.

By organizing events like the Bavarian Evening, Midsemester Party, and Summer & Winter festivals, we create a social, fun environment alongside your studies.

Members also enjoy internal meetups like ice skating or visiting the Dult.

Join us to meet new people, share ideas, and gain valuable experience - all while adding variety to your student life.
Get involved and make a difference!

For more information check out our [Facebook](#), [Instagram](#), write an email to mail@campuslandshut.de or visit us at our office E1 12.

13. SPORTS OFFER

Stay fit and enjoy your free time

Landshut:

Our sports program is part of ZHS Munich “Zentraler Hochschulsport in München”, giving you access to activities on our campus and in Munich, Freising, Triesdorf, and beyond. It's a great way to meet people with similar interests!

[Here](#) you'll find an overview of the sports available on our campus, a link to the full ZHS program, and contact details for the person who can assist you with any questions.

And of course, if you need any additional support, don't hesitate to reach out to your [International Office](#).



Dingolfing

You can join clubs for badminton, basketball, boxing, dance, handball, Ju-Jitsu, athletics, fitness, table tennis, volleyball, soccer, ice hockey, tennis, and more.

[Here](#) you can see an overview of all clubs.

Additional ideas:

- Skating (1300 m²)
- Visiting the Isar-Wald Stadium (athletics tracks, grass fields, turf field, beach volleyball courts)
- Working out at [CheckPoint Fitness](#) or [Cleverfit](#)
- Walking or cycling along the river Isar
- Enjoying the [Caprima](#) public pool with sauna
- Ice skating or curling in winter / roller hockey in summer at [Marco-Sturm-Eishalle](#)
- Climbing and bouldering at the [DAV climbing hall](#)

For more information on restaurants, wellness, transport, shopping, and local services, click [here](#).

14. LANGUAGE COURSES

Improve your language skills

The University Landshut has a large offer of language courses for its students.

Its 22 language lecturers are highly trained native speakers who teach with enjoyment and dedication. You can choose from different languages and over 90 different courses!

The Languages Center will also be pleased to advise you in person so that your language program best fits your professional and personal needs.



Currently the Languages Center offers these languages:

- Chinese
- German as a foreign language
- German Sign Language
- English (including Business English)
- French
- Italian
- Japanese
- Russian (as foreign language and language of origin)
- Spanish
- Turkish (as foreign language and language of origin)

[Here](#) you can visit our Languages Center page and check out in detail all the offered courses.



15. PROGRAMS FOR INTERNATIONAL STUDENTS

Services and Support at a Glance

We want you to truly enjoy campus life in Landshut & Dingolfing and make the most of your time here! That's why we've put together a variety of initiatives designed to support you and help make your experience on campus as enjoyable and enriching as possible.

Here's a quick overview of the services available to our international students:

Welcome Week:

Before classes begin, we invite all international students to our fun and friendly Welcome Weeks. It's a great way to settle into Landshut, meet new people, and get a feel for student life.

During the Welcome Weeks and throughout the semester you can join student groups, sports teams, and enjoy a lively calendar of social events.

The International Office and student clubs also offer cultural activities, language partnerships, intercultural dinners, and more to help you make the most of your time.



For more information check out our [website](#)!



Buddy Program:

The Buddy Program is organized by the International Office with the support of local students.

You'll be matched with a student who can help you prepare for your stay, meet you upon arrival, and support you as you settle into life in Germany.

The goal is to connect international and local students, making it easier to adapt, make friends, and enjoy your time here.

If you'd like to take part, simply fill out the Buddy Programme registration [form](#).

15. PROGRAMS FOR INTERNATIONAL STUDENTS

Services and support at a glance

Tandem Program:

If you want to improve your language skills while living in Germany, the Tandem Program is a great way to do so. It connects you with a native speaker interested in your language, allowing you to practice actively and learn naturally.

This program helps you build friendships and explore your partner's culture while supporting each other's language learning independently.

To learn more, contact the [International Office](#) or the [Languages Center](#).



Welcome Service:

Whether you're feeling a bit lost, facing a problem, or simply have questions about your stay in Germany – we're here to help!

We warmly invite you to visit our Welcome Service during opening hours or to schedule an appointment at your convenience. We are happy to support you and assist you in finding the right information and services.

You can find us in Room T119, TZ Puls DIngolfing from Tuesday to Thursday.

If you are looking for support with mental health matters, you are welcome to contact Monika Haberl. She can be reached by email at Monika.Haberl@elkb.de or by phone at 0162-9491719.

16. EVENTS IN LANDSHUT AND DINGOLFING

Events, vibes, and good times!



There's always something happening in Landshut and Dingolfing - whether you're into culture, sports, social events, or shopping.

Check the university's event pages regularly to meet new people, explore the city, and enjoy campus life!

- Find events organized by student groups
- Visit the „Student Groups“ section for more info
- Need ideas for free time? Check [here](#)
- View Dingolfing's event calendar [here](#)

Life in Dingolfing

Enjoy shopping and dining at Marienplatz or visit the [weekly market](#) every Tuesday and Friday. In March, don't miss the [Mittefastenmarkt](#).

Love nature? Go hiking or cycling - popular routes are listed [here](#).

Tourist highlights include the Herzogsburg Castle, Stinkerturm, Storchenturm, and the city walls.

More info is available at the Bruckstadel or [here](#).

Nightlife

Looking for a fun night out? Check out local bars like Bel Air, Adebar, Cantina Diablos, or Isar Hütt'n to meet people and enjoy the evening.

Recreation & Culture

Dingolfing offers year-round leisure options. Try bowling at [Starlight Bowling Landau](#), swimming at [Caprima](#), or skating at the [ice arena](#). For a relaxed time, visit the [Filmpalais cinema](#).

Interested in culture? Visit the [Stadthalle](#), [Herzogsburg](#), or [Bruckstadel](#) for concerts, exhibitions, and more. Learn an instrument at the [Music School](#) or join language, culture, or sports courses at [VHS Dingolfing](#).

You can also find local clubs via [Dahoam in Niederbayern](#) - new members are always welcome! Explore the city with the Dingolfinger Stadtexplorer app.

Welcome to all students in Landshut and Dingolfing!

We're excited to have you here and wish you a great start full of success, new friendships, and unforgettable experiences. Enjoy your time and make the most of every opportunity!



HOCHSCHULE LANDSHUT
Hochschule für angewandte Wissenschaften
Am Lurzenhof 1
84036 Landshut

Tel.: +49 (0)871 - 506 0
info@haw-landshut.de
www.haw-landshut.de

TECHNOLOGIEZENTRUM
Produktions- und Logistiksysteme (TZ PULS)
Bräuhausgasse 33
84130 Dingolfing

Tel.: +49 (0) 8731 / 32 74 810
info@tz-puls.de
www.haw-landshut.de