

University of South Wales

Information for outgoing undergraduate students

IB-Bachelor



Dezember 2022

Prof. Dr. Sandra Gronover



University of South Wales Treforest Campus, Pontypridd

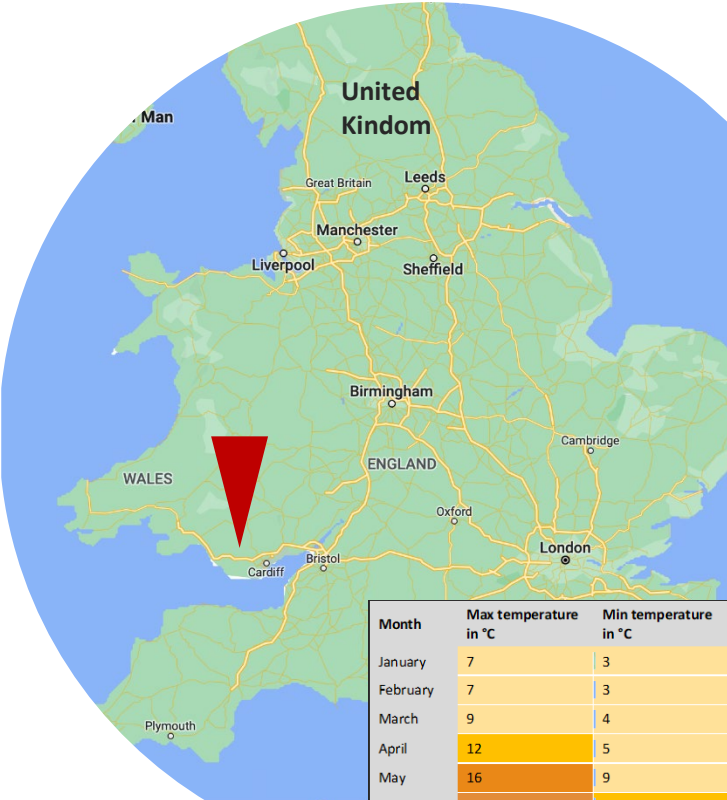


South Wales Business School



- International student guide:
<https://www.southwales.ac.uk/prospectus/international-student-guide/>

Pontypridd

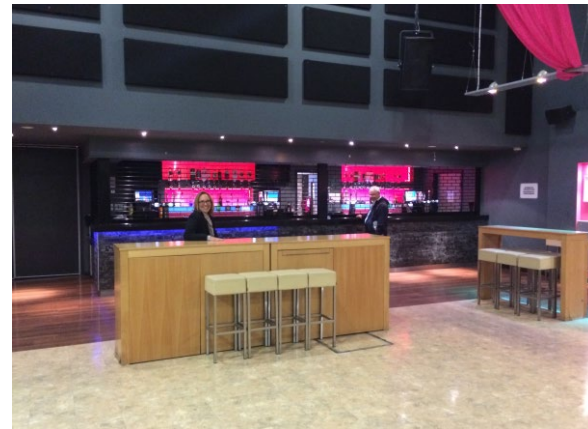


Month	Max temperature in °C	Min temperature in °C	Rainy days
January	7	3	11
February	7	3	9
March	9	4	9
April	12	5	9
May	16	9	10
June	19	11	8
July	21	14	9
August	20	13	10
September	17	11	9
October	13	8	10
November	10	6	11
December	8	4	10

- The University of South Wales is located just outside **Cardiff**, the **capital city of Wales** and Europe's fastest growing capital
- **English and Welsh** are the official language
- **Pontypridd** community has a population of approximately 33,000
- There are three national parks – beautiful mountains and fantastic beaches

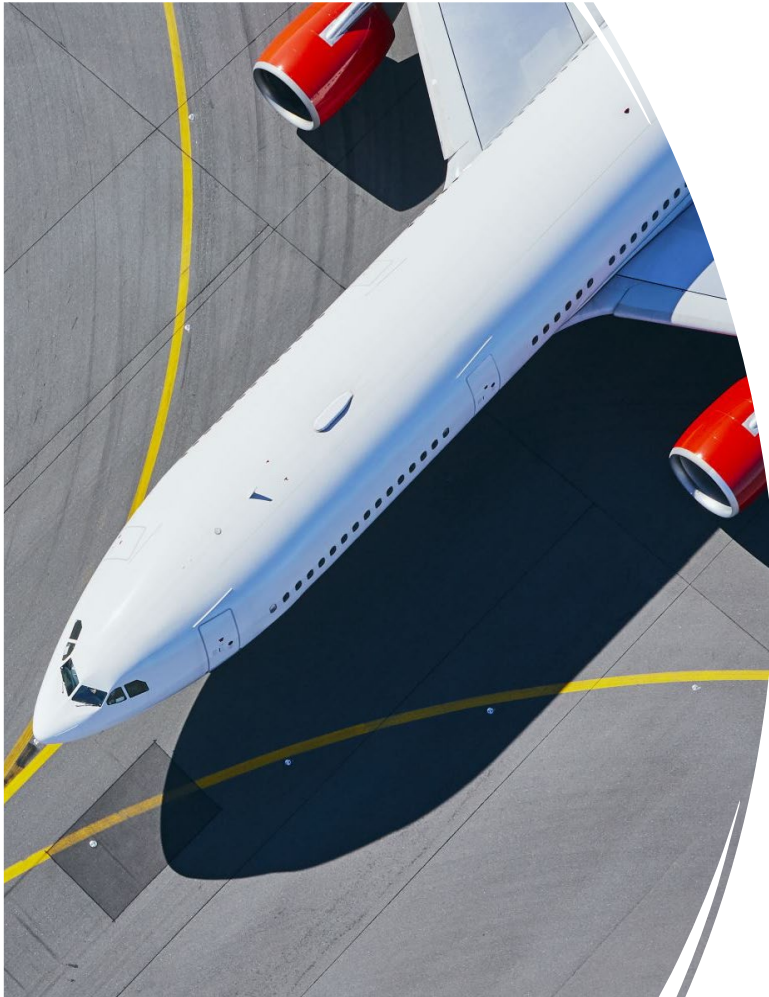
Impressions (October 2015)

The Students' Union (SU)



Several places to eat and drink on campus

How you can get to Treforest?



- **Treforest Rail Station** is a short walk away from each of the sites, with direct trains running to Cardiff every 20 minutes.
 - ✓ Treforest – London: 2 h 48 min
 - ✓ Treforest – Manchester: 4 h 3 min
 - ✓ Treforest – Cardiff: 21 min
- **Cardiff International Airport** is a 45-minute drive away
- **Bristol Airport** is also a good alternative (easy access by train or bus)
- **London Heathrow Airport** is also an alternative (easy access by train or bus)

Accommodation

- Three accommodation sites from the university, located in Cardiff, Treforest and Newport
- **Halls at Treforest** have place for over **1,200 students**
- Halls of residence rents range from approximately **98 to 135 GBP per week**
- All accommodations are self-catered
- Private accommodation as an alternative (recommended by former students)
- <https://www.southwales.ac.uk/student-life/accommodation/>



In general: Cost of living
under UK average

Tips from other LA-students (2017)

- Overall Cardiff is on average cheaper than other UK cities!
- Cheapest options are private rooms in shared houses in Pontypridd – very close to the campus (starts by 100 GBP a month)
- 'Best' option by students' opinion: Shared houses in Cathays
 - Cathays is in Cardiff and a 15-minute train ride to the Pontypridd/Treforest Campus and is one train stop away from the actual City Centre.
 - You can find information regarding accommodation in Cardiff here:
<https://www.southwales.ac.uk/student-life/accommodation/cardiff-accommodation/>

- **A lot of assignments** – less exams – typically 2 assessments per module. (Please check the module descriptions on the website – some LA students have been a little bit surprised by the number of assignments)
- **Classes are international** – not so much contact to 'original' UK-students (issue is addressed – hope to get an improvement next year); best to find shared houses with UK students or join the sports clubs on campus. [The mix of UK/Welsh and international students very much depends on the course and modules you study. Course Leaders are proactive about placing EU students in a good group mix to enhance their UK experience.]
- Landshut students should **decide by March if they would like to go to the University of South Wales (but there is flexibility with this deadline) and until April** what is their specialisation! Important for planning – special track to cover financial management requirements for Landshut

- **2 semesters** per academic year
 - **September – December**
 - **January – June**


Autumn Term (2022)	
12 September	Optional: International Welcome Week
19 September	Enrolment and Induction
26 September	Immersive Learning Week
3 October	Teaching begins
9 December	Last day of teaching
12 Dec	Showcase Week (may include exams and other assessments)

Spring Term (2023)	
9 January	Immersive Learning Week
16 January	Teaching begins
27 March	Showcase Week (may include other assessments)
April	Easter Vacation
Summer Term:	
May	Exams (if relevant)



Course selection – Requirements from HAW Landshut (1)

- Details written in the BA-IB-SPO!
 - SPO – 7. Änderungssatzung; Cover modules in
 - International Management
 - Financial Management
 - Strategic Management
 - Studium Generale (6 ECTS)
 - Dissertation (12 ECTS)

(42 ECTS)
 - **USW demands 60 ECTS points from USW for a double degree! According to USW regulations!**
 - **IMPORTANT: USW will not steer the process that you select the RIGHT subjects concerning the requirements of HAW Landshut. This is the individual responsibility of every student!**
 - **For the double degree, you have to fulfill requirements from 2 universities! More work ... but you receive 2 degrees.**
- 

Course selection – Requirements from HAW Landshut (2)

Dissertation

- by Bavarian regulations a max of 12 ECTS can be given
- The dissertation at USW is 20 ECTS (40 Credits) or for the Top Up courses, this is a 10 ECT Management Project (20 credits)
- Generally at USW, the dissertation has shifted towards more practical learning experiences in practical projects

Options:

- Dissertation written under HAW-LA supervision (can also be done virtually) (Preferred option)
- Dissertation written under USW supervision – an additional course is needed for receiving the ECTS for HAW-LA - depending on timetable and might lead to additional costs (not finally discussed with USW)

Preconditions & Academic year

- **English level B2** (certified by HAW Landshut)
- **120 ECTS points**
 - Students must have 120 ECTS points, otherwise, they cannot be accepted in USW.
 - On an individual basis it would be possible to compensate missing exams from the 1st or 2nd year at HAW Landshut by other subjects e.g. PLV, vhb - but in total **120 ECTS are needed!**
- The USW **academic year starts in September 2023:**
 - Induction and enrolment commence mid/end of September
 - Immersive Learning week is end of September
 - Teaching starts in the beginning of October

Under discussions

BA (Hons) Business Management (with specialist pathways)

3 core modules: Applied Management, Business Strategy, Business Research
2 specialisms depending on pathway, plus Finance module

<p><u>Business Management</u></p> <p>2 option modules</p>	<p><u>Accounting and Finance</u></p> <p>Principles of Accounting</p> <p>Principles of Corporate Finance</p>	<p><u>HRM</u></p> <p>HRM 4.0 and the Future of Work</p> <p>HRM Context and Challenges</p>	<p><u>Enterprise and Innovation</u></p> <p>Innovation Management</p> <p>Business Ethics and Sustainability</p>	<p><u>Events Management</u></p> <p>Business Ethics and Sustainability</p> <p>Applied Events Management</p>	<p><u>Marketing</u></p> <p>Excellence in Customer Service</p> <p>Omni-Channel Marketing Strategy</p>	<p><u>Supply Chain Management</u></p> <p>Logistics and Material Management</p> <p>Commercial Procurement</p>
---	---	---	--	--	--	--

You study 6 modules (10 ECTS)

Compulsory for Landshut:

International Business = USW Applied Management

Strategic Management = USW Business Strategy

Financial Management = USW AF3S542 Strategic Business Partner as an Authorised Substitution (drop Management Project)

BA (Hons) International Business

Under review

		<u>TERM</u>
BS3S12	Applied Management	1
ST3S83	Business Strategy	1
BS3S92	Business Research: Principles and Practice	1
AF3S542	Strategic Business Partner	1 & 2
EB3SX1	International Business Management	2
BS3S94	International Culture and Communications	2

You study 6 modules, all are 10 ECTS

Direct entry to the final year

BA (Hons) Business and Management

1. International Business Management
2. Business Ethics and Sustainability
3. Contemporary Global Leadership
4. Strategic Management
5. Critical Enquiry Project OR a Consultancy Project

BA (Hons) Human Resource Management

1. Strategic Management
2. Developments in Employee Relations
3. HRM 4.0 and the Future of Work
4. Employee Engagement: Rhetoric's and Reality
5. HRM Critical Enquiry Project

BSc (Hons) Marketing Management

1. Strategic Management
2. Public Relations and Reputation Management
3. Professional Selling and Business Development
4. Omni-Channel Marketing Strategy
5. Critical Enquiry Project OR a Consultancy Project

BSc (Hons) Logistics, Procurement and Supply Chain Man.

1. Supply Chain Management Risk and Sustainability
2. Strategic Procurement and Commercial Relationships
3. Global Procurement and Sourcing
4. Strategic Management
5. Dissertation

Entry requirements: 120 ECTS and curriculum needs to match USW content

Teaching and Assessment

- **Typical module delivery is 10 weeks x 4 hours a week** (blended learning, 1-hour online lecture, 3-hour interactive workshop on campus)
- **Varied assessments**, depending on the course: reports, essays, group/individual presentations, exams, simulations, research log, and team debates
- **Written course works are all submitted and marked online**

Entry requirements

- 120 ECTS in a **business-related area**, automatic acceptance to:
 - BA (Hons) International Business and Management (WBL)
 - BA (Hons) Business Management – *and all of the specialism pathways*
- 120 ECTS, **plus a curriculum check** of the content of these credits for:
 - BA (Hons) Business and Management
 - BA (Hons) Human Resource Management
 - BSc (Hons) Logistics, Procurement, and Supply Chain Management
 - BSc (Hons) Marketing Management

AND

- English Language: IELTS 6.0 (minimum 5.5 on each component), or equivalent
 - Recommendation and English Language Endorsement letter provided by Landshut

Curriculum has to be finally discussed – as soon as interested students have selected a certain pathway

Direct Entry to the final year of the following BA/BSc degrees

Important note: As there is no Advanced Standing Agreement in place, students would need to make an individual application, and the USW Course Leader would check if the existing Landshut 120 ECTS would enable students to meet the course learning outcomes.

BA (Hons) Business and Management				BA (Hons) Human Resource Management			
Module Code	Module Title	ECTS	Term	Module Code	Module Title	ECTS	Term
EB3SX1	International Business Management	10	1	HR3SX4	Employee Engagement: Rhetoric's and Reality	10	1
BS3SX1	Business Ethics and Sustainability	10	1	HR3SX3	Developments in Employee Relations	10	1
HR3SX1	Contemporary Global Leadership	10	2	AF3S542	Strategic Business Partner	10	1 & 2
AF3S542	Strategic Business Partner	10	1 & 2	HR3SX2	HRM 4.0 and the Future of Work	10	2
ST3SX1	Strategic Management	10	2	ST3SX1	Strategic Management	10	2
OPTION				HR3DX5	HRM Critical Enquiry Project	20	1 & 2
BS3DX3	Critical Enquiry Project	20	1 & 2	Authorised Substitution of HR3SX3 for AF3S542			
BS3DX2	Consultancy Project	20	1 & 2				
Authorised Substitution of HR3SX1 for AF3S542							
BA (Hons) Business and Management (Event Management)				BSc (Hon) Marketing Management			
Module Code	Module Title	ECTS	Term	Module Code	Module Title	ECTS	Term
LM3SX1	Applied Events Management	10	1	ST3SX1	Strategic Management	10	2
MK3S86	Public Relations and Reputation Management	10	1	MK3S86	Public Relations and Reputation Management	10	1
AF3S542	Strategic Business Partner	10	1 & 2	AF3S542	Strategic Business Partner	10	1 & 2
ST3SX1	Strategic Management	10	2	MK3SX1	Professional Selling and Business Development	10	1
LM3SX2	Live Event	10	2	MK3SX2	Omni-Channel Marketing Strategy	10	2
OPTION				OPTION			
BS3DX3	Consultancy Project	20	1 & 2	BS3DX2	Consultancy Project	20	1 & 2
BS3DX2	Critical Enquiry Project	20	1 & 2	BS3DX3	Critical Enquiry Project	20	1 & 2
Authorised Substitution of MK3S86 for AF3S542				Authorised Substitution of MK3S86 for AF3S542			
BSc (Hons) International Business and Management				BSc (Hons) Logistics, Procurement and SCM			
Module Code	Module Title	ECTS	Term	Module Code	Module Title	ECTS	Term
EB3SX1	International Business Management	10	1	PS3S73	Supply Chain Management Risk and Sustainability	10	1
HR3SX1	Contemporary Global Leadership	10	2	PS3S84	Strategic Procurement and Commercial Relationships	10	2
ST3SX1	Strategic Management	10	2	PS3S85	Global Procurement and Sourcing	10	1
AF3S542	Strategic Business Partner	10	1 & 2	ST3SX1	Strategic Management	10	2
PS3S85	Global Procurement and Sourcing	10	1	PS3S82	Dissertation Part A	10	1
OPTION				PS3S81	Dissertation Part B	10	2
BS3DX5	International Consultancy Project	20	1 & 2	AF3S542	Strategic Business Partner	10	1 & 2
BS3DX6	International Critical Enquiry Project	20	2 & 2	Authorised Substitution of AF3S542 for PS3S81			
Authorised Substitution of PS3S85 for AF3S542							

Application procedure

- Applications should be made online and via your international coordinator.
- Once USW receives the application you will be issued with a “conditional offer” that will read “**120 ECTS on entry.**”
- This means that you will have to have successfully completed 120 ECTS. Your international coordinator will confirm this to USW.
- You will then be issued with an “unconditional offer” that you will need to accept personally.
- Once this is done you will be contacted by the University about start dates, accommodation, etc.
- We would like the applications to be with us by the **end of March**

	Duration < 6 months		Duration > 6 months	
	EU student	Non-EU student	EU student	Non-EU student
VISA*	Standard visitor visa	Standard visitor visa	Student visa	Student visa
Language test	B2 English level (certified by HAW)	B2 English level (certified by HAW)	B2 English level (certified by HAW)	B2 English level (certified by HAW)
Health care	EU health care enough	International health insurance required	Immigration health surcharge	Immigration health surcharge
Work	None	None	< 20 hours/week	< 20 hours/week

* The USW International team are available to provide further information and guidance: [Maria Fernandes](#).

Tuition fee

All tuition fees under review! – approx 12.000 minus Scholarship



- **Tuition fees 2023-24: approx. 13,700 GBP**
- **Scholarship** of the University of South Wales for European citizens - approx. **4,700 GBP**
- **Sum up: Fees approx. 9,000 GBP = 10,500 EUR**
- Bachelor: Thesis can either be written with HAW Landshut or University of South Wales

Information without guarantee!



Prof. Dr. Sandra Gronover
Hochschule Landshut
Am Lurzenhof 1
84036 Landshut

Tel. +49 (0)871 – 506 411
Fax +49 (0)871 – 506 506
info@haw-landshut.de
www.haw-landshut.de