

# University of South Wales

## Information for outgoing undergraduate students



December 2019

Prof. Dr. Sandra Gronover



# Zusammenfassung

## Warum USW?



- USW bietet die Möglichkeit einer **Spezialisierung!**
- Interessante Stadt, **tolles Studentenleben**, super Natur und gute Möglichkeiten das Land zu bereisen
- **Lebenshaltungskosten** deutlich unter UK-Niveau – trotz Studiengebühren kann es bei einem Vollkostenansatz eine interessante Alternative aus Kostengesichtspunkten sein

# Campus Treforest Pontypridd

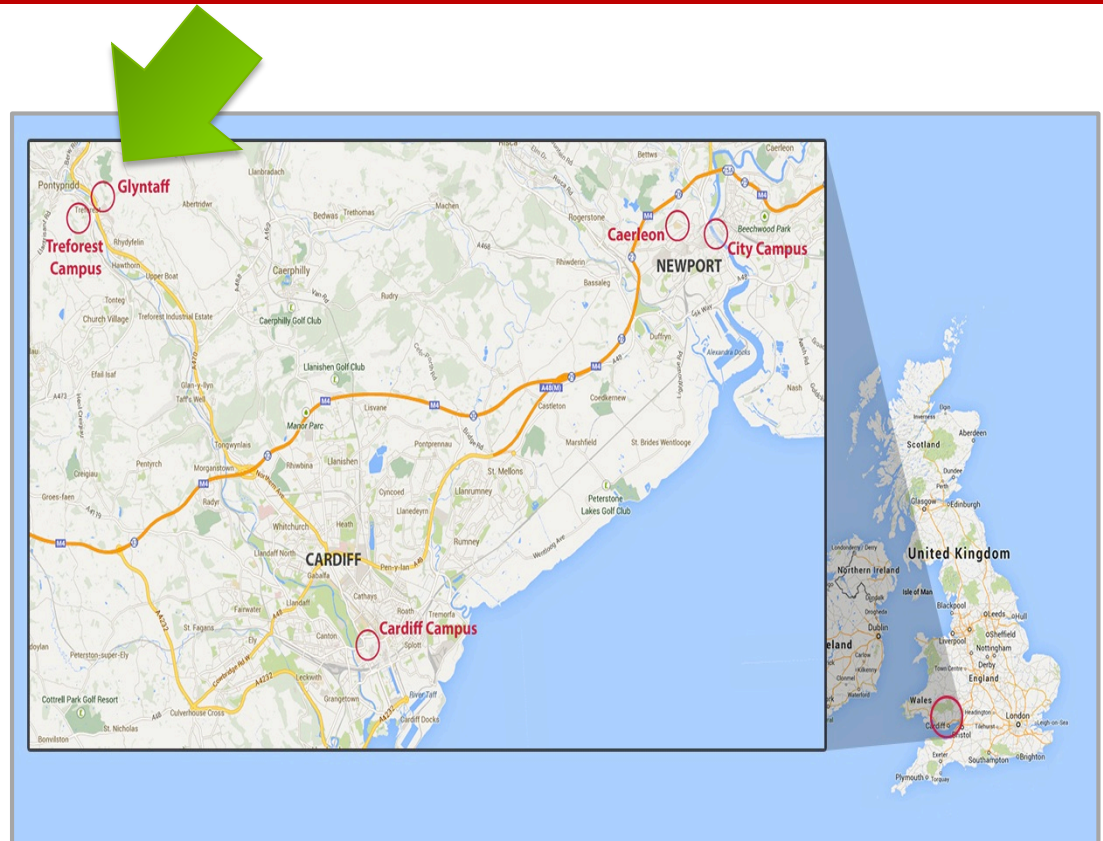


- One of the 10 largest universities in UK
- More than **33,584 students** from all over the world
- 1,030 EU students
- There are currently 219 German students studying at the University of South Wales
- 175 Bachelor Degree Programmes
- 140 Master´s Degree Programmes
- <http://www.southwales.ac.uk>



# Location

- The University of South Wales is located just outside **Cardiff**, the **capital city of Wales** and Europe's fastest growing capital.
- Wales has a population of 3.5 million
- Part of the UK



# Overview of the Treforest Pontypridd Campus

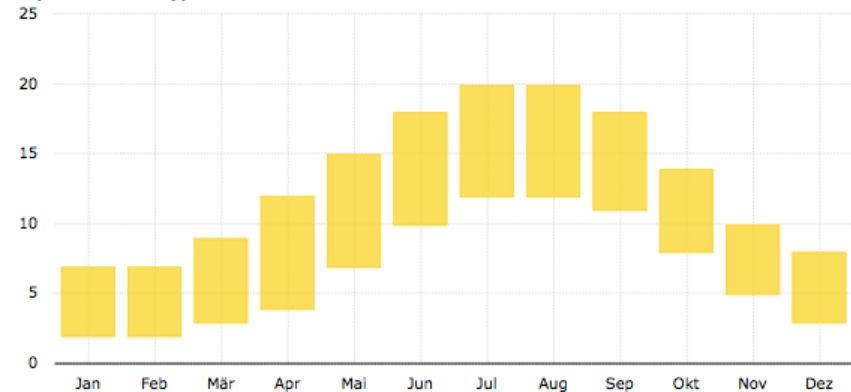
- <https://www.youtube.com/watch?v=I9qzMWZu0V8>



- English and Welsh is the official language
- Pontypridd Campus is made up of two sites (Treforest and Glyntaff), just a short 15 minute walk from each other. **All teaching for Business School courses takes place at the Treforest Campus**
- Here, all learning, living and leisure facilities are within easy reach, plus you'll be close to shops, bars and restaurants
- Pontypridd community has a population of approximately 32,700



Klimatabelle Pontypridd  
Temperaturen Pontypridd



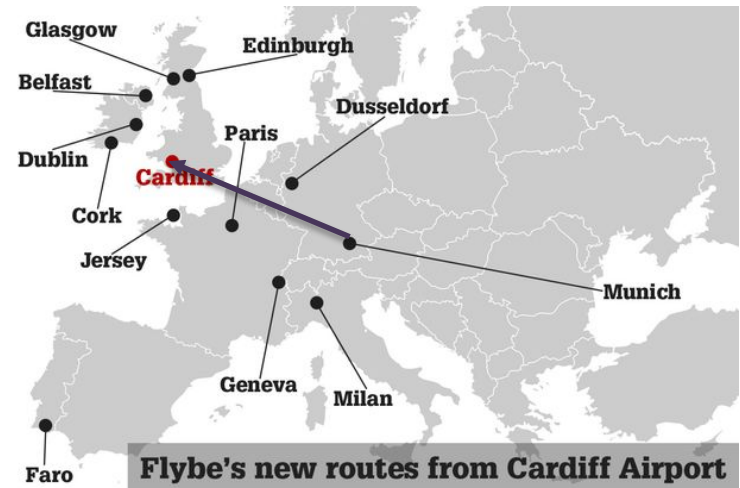
# Why Pontypridd/South Wales?

- Relatively low cost of living
  - Easily accessible
  - Lively cities, peaceful towns, castles and historical sites
  - Three national parks – beautiful mountain and fantastic beaches
  - Friendly, welcoming and safe
  - English is the language of education and business
- (everyoe in Wales can speak English)

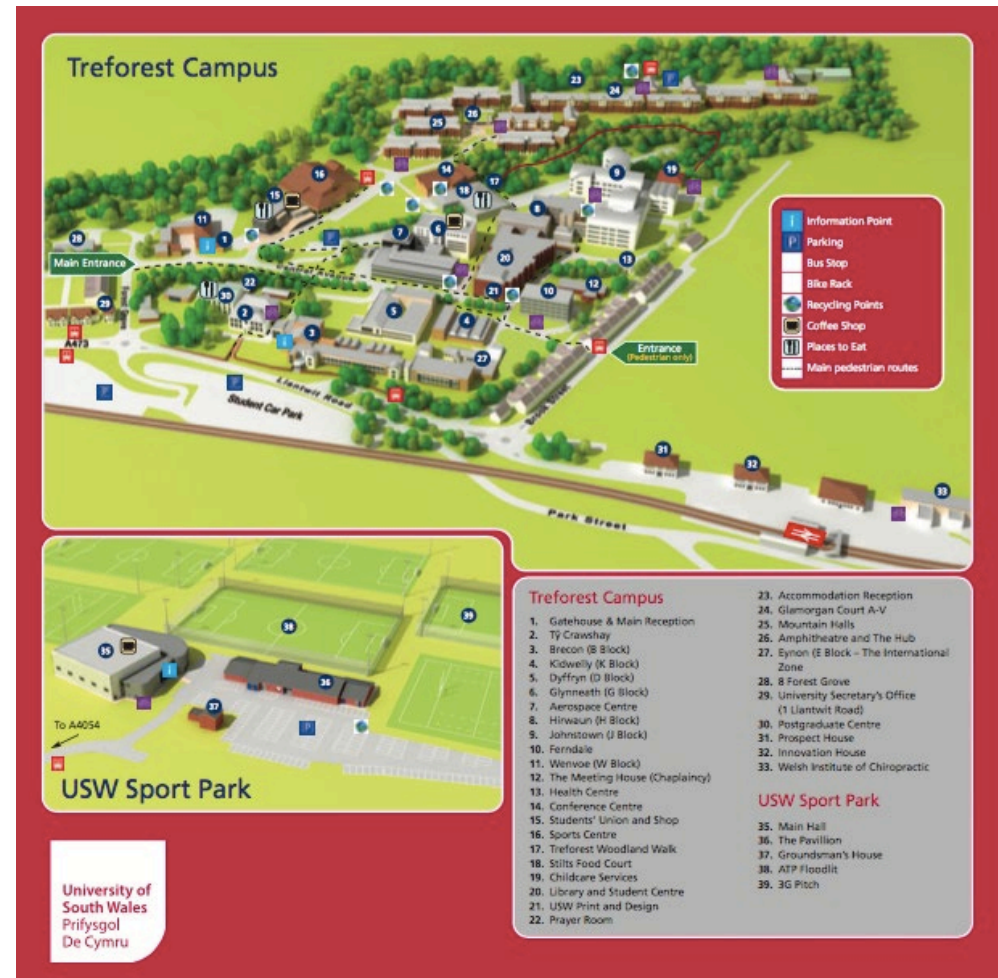




- **Treforest Rail Station** is a short walk away from each of the sites, with direct trains running to Cardiff every 20 minutes.
  - ✓ Treforest – London: 2 hours 48 minutes
  - ✓ Treforest – Manchester: 4 hours 3 minutes
  - ✓ Treforest – Cardiff: 21 minutes
- **Cardiff International Airport** is a 45 minute drive away
  - ✓ There are **direct flights** from **Munich to Cardiff (Airline Flybe)**
  - ✓ Flight time is about 2 hours
- **Bristol Airport** is also a good alternative (easy to access by train or bus)



- More information about Pontypridd Campus, Treforest
- <http://www.southwales.ac.uk/about/location/treforest-pontypridd-campus/>

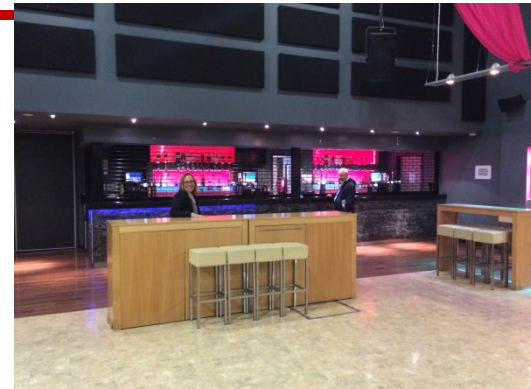


# Impressions (October 2015) – Part 1



Campus

## Club in the Student's Union (SU)



Several places to eat and drink on campus



- There is fully equipped Sports Centre on campus and the University has excellent outdoor facilities providing a wide range of instructional, recreational and competitive programmes for those who wish to participate across a wide range of sports.
- <http://sport.southwales.ac.uk/treforest/>



# Impressions October 2015 – Part 2

## Sport center on campus





- There is a range of accommodation available ranging from **halls of residences on campus** and in Cardiff and **private rented accommodation** in Treforest, Pontypridd and Cardiff  
<https://www.southwales.ac.uk/student-life/accommodation/options>
- Halls of residence rents start from approx £93 per week all inclusive, with early bird discounts for EU students (<https://www.southwales.ac.uk/student-life/accommodation/payment/costs/>)
- In the private sector there are a range of options from flats to shared houses. Rents here can range from £50 per week upwards, depending on quality and location
- <http://accommodation.southwales.ac.uk/>

- Overall Cardiff is on average cheaper than other UK cities!
- Cheapest options are private rooms in shared houses in Pontypridd – very close to the campus (starts by 100 GBP a month)
- „Best“ option by students opinion: shared houses in Cathays
  - Cathays is in Cardiff and a 20 minute train ride to the Pontypridd/Treforest Campus.
  - *The area of Cathays, given its proximity to most of [Cardiff University](#)'s teaching sites and [University Hospital of Wales](#), has seen a dramatic fall in owner-occupation, with a high proportion of houses in multiple occupation (HMOs) which are let through private landlords and letting agencies to the large student population. 2012 figures available under the Freedom of Information Act show that over 70% of the houses in Cathays are now HMOs. (Wikipedia)*

- At lot of assignments – less exams (Please check the module descriptions on the web site – some LA students have been a little bit surprised with the number of assignments)
- Classes are very international – not so much contact to „original“ UK-students (issue is adressed – hope to get an improvement next year); - best to find shared houses with UK students or join the sports clubs and Students‘ Union clubs abd societies on campus
- Landshut students should **decide by March if they would like to go to the University of South Wales and have until April** to confirm their specialisation!  
Important for planning



# Business Courses and Specialisations

- Bachelor thesis module equivalent to one 20 ECTS course – **which module/course is replaced will be decided by the University of South Wales!**
- Please be aware: A lot of assignments and not so many exams!

BA (Hons)  
Business and  
Management

BA (Hons)\*  
Accounting and Finance

BA (Hons)\*  
Forensic Accounting

BSc (Hons)  
Marketing Management

BA (Hons)  
Human Resource  
Management

BSc (Hons) Logistics,  
Procurement and Supply  
Chain Management

\* Prerequisite: basic accounting, finance and financial reporting.  
Courses are being updated, so modules and content subject to change.

# Course Selection – Requirements from HAW Landshut

- Details written in the BA-IB-SPO!
- SPO – 7. Änderungssatzung; Cover modules in
  - International Management (42 ECTS)
  - Financial Management
  - Strategic Management
  - Studium Generale (6 ECTS)
  - Dissertation (12 ECTS)
- **USW demands 60 ECTS points from USW for double degree! According to USW regulations!**
- **IMPORTANT: USW will not steer the process that you select the RIGHT subjects concerning the requirements of HAW Landshut. It is the individual responsibility of every student!**
- **For the double degree you have to fulfil requirements from 2 universities! More work ... but you receive 2 degrees.**



# BA (Hons) Business and Management

## Business and Management – Year 3

Module Code	Module Title	ECTS	Compulsory for Landshut
<a href="#">EB3SX1</a>	International Business Management	10	è International Management
<a href="#">HR3SX1</a>	Contemporary Global Leadership	10	
<a href="#">ST3SX1</a>	Strategic Management	10	è Strategic Management
<a href="#">AF3S130</a>	Business Analysis for Accountants	10	è Financial Management
<b>OPTION</b>			
<a href="#">BS3DX3</a>	Critical Enquiry Project	20	<b>Check is this a problem for Landshut</b>
<a href="#">BS3DX2</a>	Consultancy Project	20	

*Students have to come back to Landshut with 60 ECTS points that can be accepted by HAW Landshut*

# BA (Hons) Human Resource Management

## Year 3 Human Resource Management

Module Code	Module Title	ECTS	Compulsory for Landshut
<a href="#">ST3SX1</a>	Strategic Management	10	è Strategic Management
<a href="#">HR3SX3</a>	Developments in Employee Relations	10	
<a href="#">HR3SX2</a>	HRM 4.0 and the Future of Work	10	è International Management? Check with Sandra.
<a href="#">AF3S130</a>	Business Analysis for Accountants	10	è Financial Management
<a href="#">HR3DX5</a>	HRM Critical Enquiry Project	20	Check is this a problem for Landshut

*Students have to come back to Landshut with 60 ECTS points that can be accepted by HAW Landshut*

# BSc (Hons) Marketing Management

Year 3 <u>Marketing Management</u>			
Module Code	Module Title	ECTS	Compulsory for Landshut
<a href="#">ST3SX1</a>	Strategic Management	10	è Strategic Management
<a href="#">MK3SX1</a>	Professional Selling and Business Development	10	è International Management? Check with Sandra.
<a href="#">MK3SX2</a>	Omni-Channel Marketing Strategy	10	
<a href="#">AF3S130</a>	Business Analysis for Accountants	10	è Financial Management
OPTION			
<a href="#">BS3DX2</a>	Consultancy Project	20	Check with Sandra, dissertation possible?
<a href="#">BS3DX3</a>	Critical Enquiry Project	20	

*Students have to come back to Landshut with 60 ECTS points that can be accepted by HAW Landshut*

# BSc (Hons) Logistics, Procurement and Supply Chain Management



Year 3 <u>Logistics Procurement and SCM</u>			
Module Code	Module Title	ECTS	Compulsory for Landshut
<a href="#">PS3S73</a>	Supply Chain Management Risk and Sustainability	10	
<a href="#">PS3S84</a>	Strategic Procurement and Commercial Relationships	10	
<a href="#">PS3S85</a>	Global Procurement and Sourcing	10	è International Management
<a href="#">ST3SX1</a>	Strategic Management	10	è Strategic Management
<a href="#">PS3S82</a>	Dissertation Part A	10	Check with Sandra, this is the Lit Research element of a dissertation.
<a href="#">AF3S130</a>	Business Analysis for Accountants	10	è Financial Management

# BA (Hons) Accounting and Finance

Curriculum might change – depends on partner university

BA (Hons) Accounting and Finance - 2+1				
Module Code	Specified Modules	Module transfer requirements for Landshut and South Wales		ECTS
<a href="#">AF3S120</a>	Advanced Financial Reporting	→ Financial Management (Compulsory for South Wales and Landshut)		10
<a href="#">AF3S116</a>	Global Governance, Risk and Ethics	→ International Management (Compulsory for South Wales and Landshut)		10
<a href="#">AF3S130</a>	Business Analysis for Accountants	→ Strategic Management (Compulsory for South Wales and Landshut)		10
<a href="#">AF3S115</a>	Accounting Research	Compulsory for South Wales		10
Module Code	Option Modules	Only two Option Modules for Landshut and South Wales		
<a href="#">AF3S118</a>	Cases in Audit	Option for South Wales and Landshut		10
<a href="#">AF3S119</a>	Principles of Forensic Accounting	Option for South Wales and Landshut		10
<a href="#">AF3S127</a>	Advanced Management Accounting	Option for South Wales and Landshut		10
<a href="#">AF3S129</a>	Theory and Practice of Securities Trading	Option for South Wales and Landshut		10

- Courses in blue are compulsory either for Landshut or for USW
- Students cannot write their dissertation at USW; Has to run under the supervision of Landshut
- Students have to come back to Landshut with 60 ECTS points that can be accepted by HAW Landshut
- **All information on courses is preliminary** – there might be changes still until the beginning of the semester

# BA (Hons) Forensic Accounting

Curriculum might change – depends on partner university

BA (Hons) Forensic Accounting - 2+1				
Module Code	Specified Modules	Module transfer requirements for Landshut and South Wales	Credits	ECTS
<a href="#">AF3S140</a>	Forensic Accounting and the Expert Witness	Compulsory for South Wales	20	10
<a href="#">AF3S141</a>	Financial Crime Investigation	Compulsory for South Wales	20	10
<a href="#">AF3S116</a>	Global Governance, Risk and Ethics	→ International Management (Compulsory for South Wales and Landshut)	20	10
<a href="#">AF3S115</a>	Accounting Research	Compulsory for South Wales	20	10
Module Code	Option Modules	Two Compulsory Modules for Landshut		
<a href="#">AF3S130</a>	Business Analysis for Accountants	→ Strategic Management (Compulsory for Landshut)	20	10
<a href="#">AF3S120</a>	Advanced Financial Reporting	→ Financial Management (Compulsory for Landshut)	20	10

- Courses in blue are compulsory either for Landshut or for USW
- Students cannot write their dissertation in BA Forensic Account at USW as they have to follow a compulsory schedule!
- Students have to come back to Landshut with 60 ECTS points that can be accepted by HAW Landshut
- **All information on courses is preliminary** – there might be changes still until the beginning of the semester



- Preconditions for Landshut students (outgoings)
  - English level B2 (certified by HAW Landshut)
  - 120 ECTS points
    - Students have to have 120 ECTS points, otherwise they cannot be accepted in Cardiff.
    - On an individual basis it would be possible to compensate missing exams from the 1st or 2nd year at HAW Landshut by other subjects e.g. PLV; But in total 120 ECTS are needed!\*
  - Students can start in September (regular, 60 ECTS) or January (30 ECTS) (based on individual agreements)

\* *On an exceptional basis, if students have 110 ECTS, it is still possible to join USW for some courses, but students will need to study an additional 10 ECTS module in order to qualify for the dual degree.*

- Applications should be made online and via your international coordinator.
- The following link will take you to our European page:  
<http://international.southwales.ac.uk/study-abroad/incoming/europe/2-1>
- It is important that you fill this form in carefully, so follow carefully the step by step instructions. All the information you need will be under the “Guide To Applying Button”
- Once USW receive the application you will be issued with a “conditional offer” that will read “120 ECTS on entry.”
- This means that you will have to have successfully completed 120 ECTS. Your international coordinator will confirm this to USW.
- You will then be issued with an “unconditional offer” that you will need to accept personally.
- Once this is done you will be contacted by the university about start dates, accommodation etc.
- Applications must be with us by the **end of March.**

# How much will it cost to go to USW?

- The fee regime in the UK is complicated. Fees at most universities vary between £8000 and £9000 p.a.
- USW is £9000 p.a. (Sept 2020)
- The Welsh Grant which covered a high percentage of the tuition fees no longer exists
- For students from LA going to USW the fee will be **circa £6,000** (approx. 6500 EUR) due to our partnership; as **USW offer a £3,000 bursary for qualifying students who confirm their place before 29 March 2020.**



\* Just for information – at the end USW fixes the tuition fees and grants



Prof. Dr. Sandra Gronover  
Hochschule Landshut  
Am Lurzenhof 1  
84036 Landshut

Tel. +49 (0)871 – 506 411  
Fax +49 (0)871 – 506 506  
[info@haw-landshut.de](mailto:info@haw-landshut.de)  
[www.haw-landshut.de](http://www.haw-landshut.de)